

# Oceanic

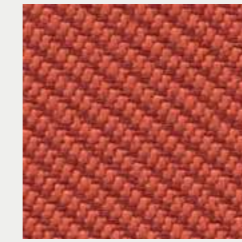
Oceanic is a fabric born of the Seaqual Initiative designed to combat marine plastic pollution and achieve a waste free environment.

CLASS D

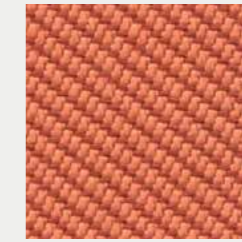
## CAMIRA - OCEANIC



ABYSS  
OOC10



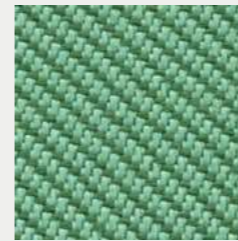
AQUATIC  
OOC12



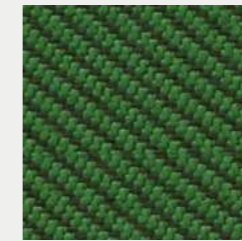
CORAL  
OOC05



BARRIER  
OOC07



SEA  
OOC04



COAST  
OOC03



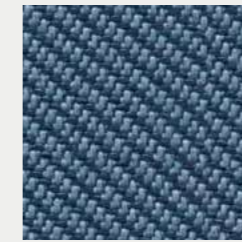
JETSAM  
OOC02



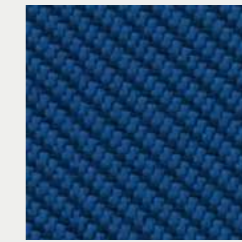
PADDLE  
OOC13



GULF  
OOC15



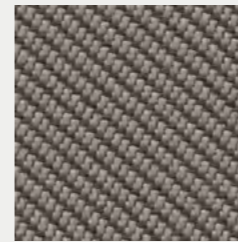
NEPTUNE  
OOC11



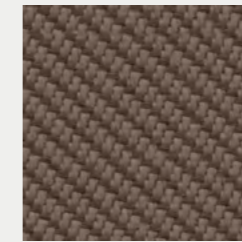
ATOLL  
OOC06



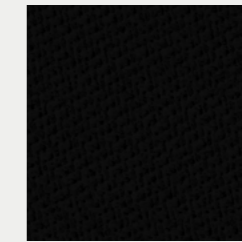
RIPTIDE  
OOC14



BAY  
OOC08

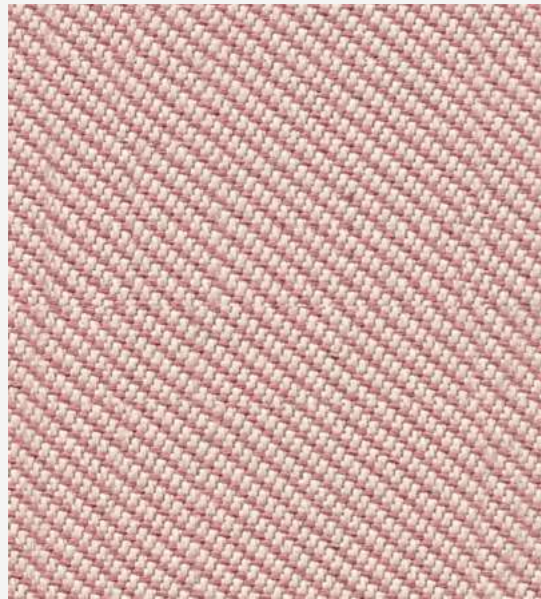


SHORE  
OOC09



FLOTSAM  
OOC01

## CAMIRA - OCEANIC

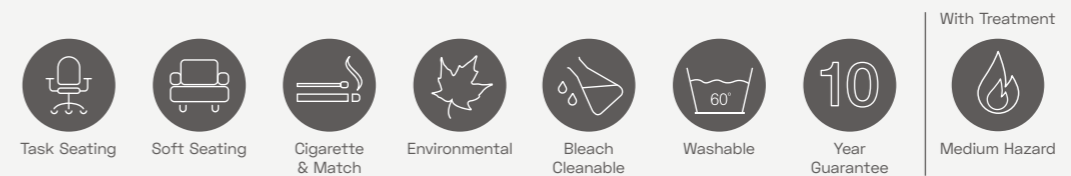


SEAFARER  
OOC16

## CAMIRA - OCEANIC

### PRODUCT SPECIFICATIONS

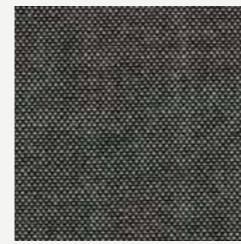
Application	Task Seating / Soft Seating
Composition	100% post-consumer recycled polyester, including 50% SEAQUAL yarn
Environmental	Certified to the EU Ecolabel Certified to OEKO-TEX® Standard 100 Certified to Indoor Advantage™ Gold Made from 100% post-consumer recycled polyester Non metallic dyestuffs
Width	140 cm minimum
Weight	497 g/m2 ±5% (696g/lin.m ±5%)
Abrasion Resistance	Heavy duty / 10 year guarantee. Independently certified to ≥100,000 Martindale cycles
Flammability	EN 1021 - 1&2 (cigarette & match) BS 7176 Low Hazard <b>Optional: Please specify when ordering</b> BS 5852 Ignition Source 5 with EnviroFlam5 BS 7176 Medium Hazard with EnviroFlam5 <b>Note:</b> Flammability performance is dependent on components used. Our certificates show what substrates have been used in our tests. For composite tests customers must ensure their complete furniture meets the necessary standards.
Light Fastness	5 (ISO 105 - B02), OOC16: 4/5 (ISO 105 - B02)
Fastness to Rubbing	Wet: 4, Dry: 4 (ISO 105 - X12)
Bleach Cleanable	ISO 105 E03 colour change 4 for dilution factor 1:4 chlorine solution.
Cleaning	Vacuum regularly. Wipe with a damp cloth using proprietary upholstery shampoo/soap. For deeper cleaning use steam, bleach, alcohol or professionally dry clean. Can be washed at 60°C.
Guarantee	10 Years



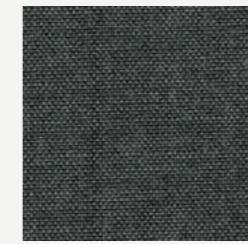
# Remix 3

A tight, minimalistic weave, and derives its lively colour play from a combination of two different mélange yarns, which each combine up to three hues.

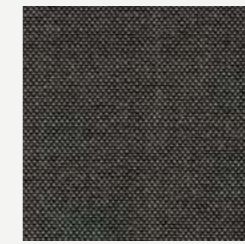
## KVADRAT - REMIX 3



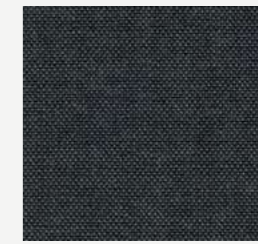
152



163



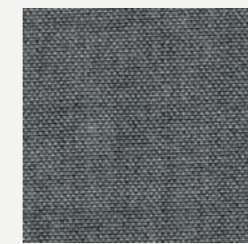
276



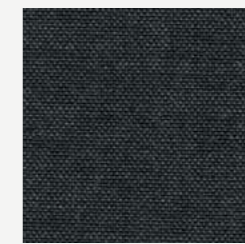
286



133



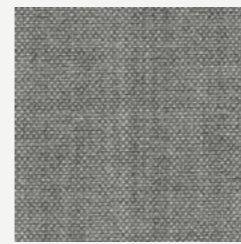
143



173



113



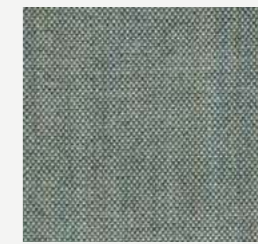
123



183



842



906



954



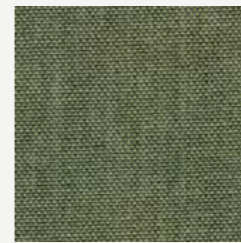
412



962



982



933



942



912



923



KVADRAT - REMIX 3



672



362



346



326



242



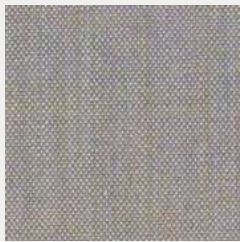
233



223



252



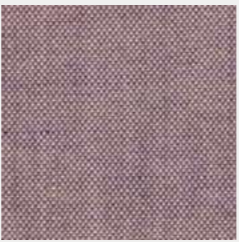
606



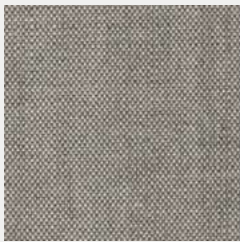
356



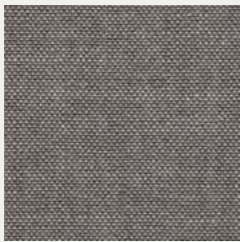
686



682



126



136



266



296



753



973



196



996

KVADRAT - REMIX 3



393



783



383



743



796



866



836



733



773



873



716



762



852



722



823



816



373



692



662



653

## KVADRAT - REMIX 3



566



643



543



632



443



612



406



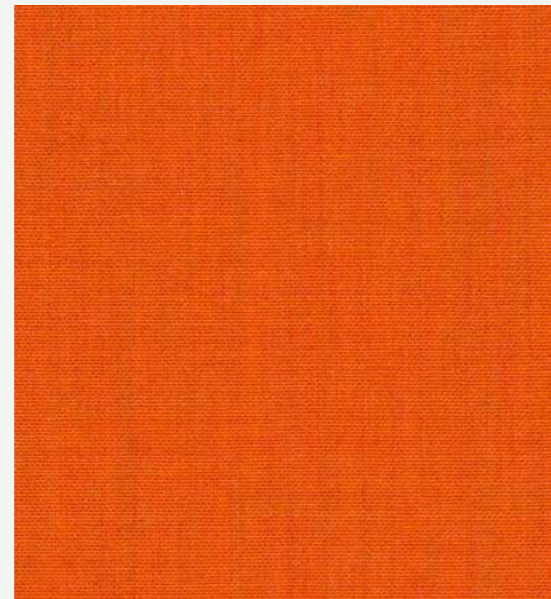
516



433



422



536



452

## KVADRAT - REMIX 3

### PRODUCT SPECIFICATIONS

Application	Offices, hotels, institutions, domestic use. Great durability.
Composition	90% new wool, worsted, 10% nylon.
Width	App. 55 inches (140 cm).
Weight	Approx. 420 g/lin.m, 13.6 oz/ly
Abrasion Resistance	App. 100,000 rubs acc. to the Martindale method EN ISO 12947.
Flammability	AS/NZS 3837 class 2 • IMO FTP Code 2010 Part 7 with treatment • SN 198 898 5.3 with treatment • ASTM E84 Class A Unadhered • BS 5852 crib 5 with treatment • AS/NZS 1530.3 • UNI 9175 1IM • NFPA 260 • IMO FTP Code 2010 Part 8 • ÖNORM B1/Q1 • GB 50222 B1 with treatment (Chinese) • BS 5852 part 1 • EN 1021-1/2 • ASTM E84 Class A Adhered • US Cal. Bull. 117-2013 • EN 13501 B-s2, d0 with treatment • NF D 60 013
Light Fastness	Note 5-7 ISO 105-B02
Fastness to Rubbing	Dry note 3-5 ISO 105-X12, Wet note 3-5 ISO 105-X12
Sound Absorption	(EN ISO 354) 0.55/Class D (flat), 0.80/Class B (waved).
Airflow	465 Pa s/m EN 29053
Pilling	Note 4, EN ISO 12945
Guarantee	10 Years
Physical properties	Pilling Class 4 Breaking Strength warp 132 / weft 138 lbs. Seam Slippage warp 126.5 / weft 130 lbs.
Environmental benefits	EU Ecolabel compliant Free of intentionally added PFAS REACH compliant Californian Proposition 65 list compliant LBC Red list compliant Healthier Hospitals compliant
Green building certificates	Greenguard Gold: Low chemical emission Environmental Product Declaration (EPD): 3rd Party Verified. ISO 14025 & EN 15804. Developed in accordance with the European standard EN 15804+A2. Health Product Declaration (HPD): Declaring textile content and substance

#### Care

Please see the ISO symbols. Vacuum clean frequently, ideally every week. Remove stains as soon as they occur, with clean warm water or sparkling water. Extraction clean when necessary. Extraction cleaning might dissolve water-based glue. Pay attention to temperature and amount of cleaning fluid.



# Blazer

Made from premium New Zealand lambswool, providing the highest quality raw material that is ideal for spinning, weaving and dyeing.

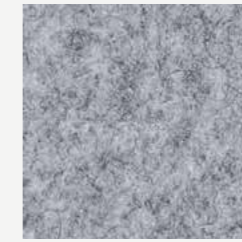
CLASS C



## CAMIRA - BLAZER



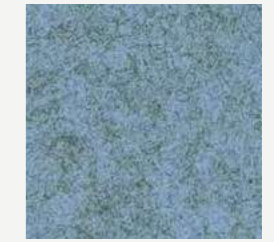
FAIRFIELD  
CUZ47



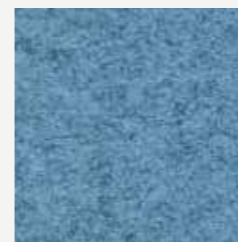
SILVERDALE  
CUZ28



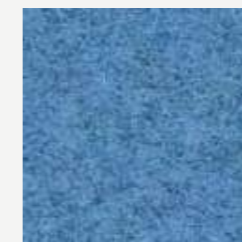
STONEBRIDGE  
CUZ4W



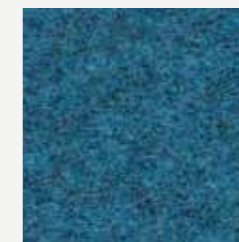
PLYMOUTH  
CUZ1R



NORLAND  
CUZ4J



PERTH  
CUZ4H



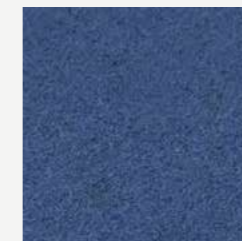
BROKENHURST  
CUZ4B



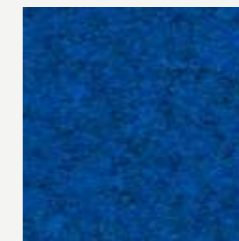
VASSAR  
CUZ2U



ASTON  
CUZ02



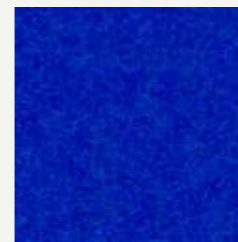
MANCHESTER  
CUZ1V



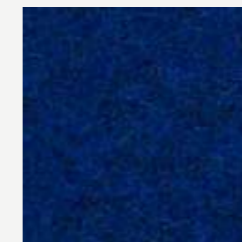
ELLESMERE  
CUZ3Z



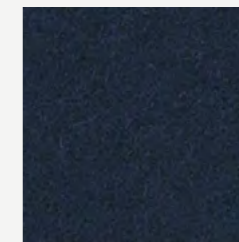
KNIGHTSBRIDGE  
CUZ26



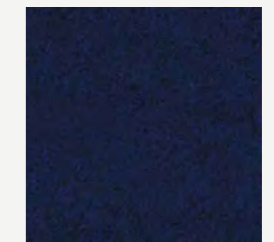
DUNDEE  
CUZ4P



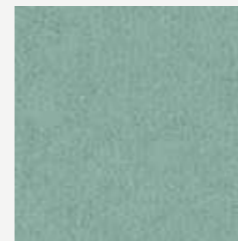
TETTENHALL  
CUZ3X



EDINBURGH  
CUZ1Y



OXFORD  
CUZ09



ULLSWATER  
CUZ4S



WOODCROFT  
CUZ2Z



MORAY  
CUZ4K



LATYMER  
CUZ33

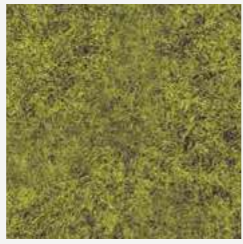
## CAMIRA - BLAZER



DARTMOUTH  
CUZ2Q



DUNHURST  
CUZ58



ULSTER  
CUZ1F



CAMPHILL  
CUZ1K



KINGHAM  
CUZ3U



STOWE  
CUZ3R



BRYANSTON  
CUZ53



NEWPORT  
CUZ1L



HEATHFIELD  
CUZ4V



OAKHAM  
CUZ3Y



MONTCREST  
CUZ3A



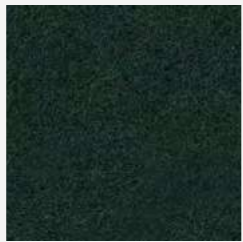
ABERTAY  
CUZ3B



AMBLESIDE  
CUZ4G



BODMIN  
CUZ4F



CARDIFF  
CUZ1N



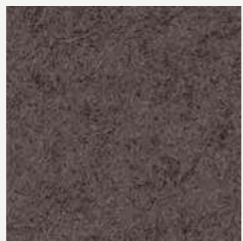
GRANTHAM  
CUZ4E



PADWORTH  
CUZ3N



ST ANDREWS  
CUZ86



TREVELYAN  
CUZ31



SURREY  
CUZ1E

## CAMIRA - BLAZER



FALMOUTH  
CUZ4M



MOORLANDS  
CUZ4T



CHICHESTER  
CUZ4C



HOLYOKE  
CUZ2T



BRISTOL  
CUZ4X



CATERHAM  
CUZ4A



WESLEY  
CUZ82



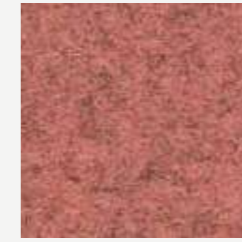
DUNALK  
CUZ4D



DERBY  
CUZ4Q



EARLSCLIFFE  
CUZ3T



ACKWORTH  
CUZ3P



WARWICK  
CUZ4L



MALVERN  
CUZ3L



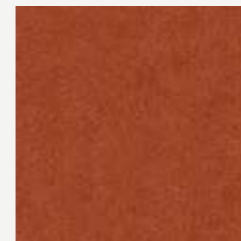
EYNESBURY  
CUZ2W



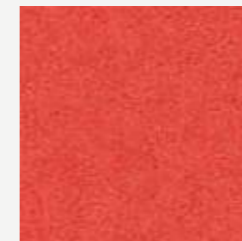
LEEDS  
CUZ4R



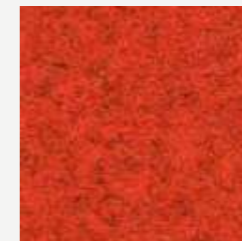
FELSTED  
CUZ3S



UPLANDS  
CUZ4U



LEICESTER  
CUZ4N



TONBRIDGE  
CUZ3Q

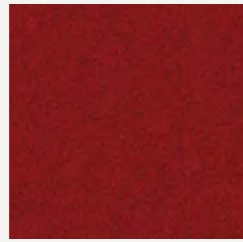


GOLDSMITH  
CUZ39

## CAMIRA - BLAZER



Oriel  
CUZ18



Wellington  
CUZ13



Handcross  
CUZ63



Magdalene  
CUZ21



Edge Hill  
CUZ90



Moreton  
CUZ3W



Sidcot  
CUZ3V



Aberlour  
CUZ1J



Newcastle  
CUZ1W



Hull  
CUZ1P



Winchester  
CUZ12



Silcoates  
CUZ30



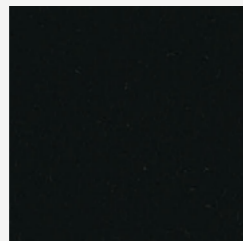
Bromsgrove  
CUZ35



Glenalmond  
CUZ62



Kingsmead  
CUZ67



Napier  
CUZ08



Lucton  
CUZ3M

## CAMIRA - BLAZER

### PRODUCT SPECIFICATIONS

Application	Task Seating / Soft Seating / Curtains
Composition	100% Virgin Wool. Non metallic dyestuffs
Environmental	Certified to Indoor Advantage™ "Gold" Rapidly renewable and compostable
Width	140 cm minimum
Weight	460 g/m2 ±5%
Abrasion Resistance	Heavy duty / 10 year guarantee. Independently certified to ≥50,000 Martindale cycles
Flammability	EN 1021 - 1&2 (cigarette & match), BS 7176 Low Hazard, NF D 60-013, ÖNORM B 3825 & A 3800-1 (58kg/m3 CMHR Foam), UNI 9175 Classe 1 IM, BS 476 Part 7 Class 1 (Adhered) EN 13501-1 Adhered Class D, s1, d0, BS 5852 Ignition Source 5 when FR treated (Adhered) BS 7176 Medium Hazard when FR treated, BS 476 Part 6 Class 0 when FR treated (Adhered) EN 13501-1 Adhered Class B, s1, d0 when FR treated, EN 13501-1 Un-adhered Class D, s2, d0 when FR treated, BS 5867-2 Type B Curtains & Drapes when FR treated, The Furniture and Furnishing (Fire) (Safety), Regulations 1988 (Domestic Cigarette and Match), IMO FTP Code (Part 8)
Light Fastness	5 (ISO 105 - B02)
Fastness to Rubbing	Wet: 4, Dry: 4 (ISO 105 - X12)
Guarantee	10 Years

#### Cleaning

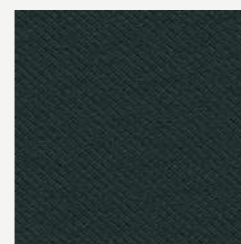
Vacuum regularly. Wipe with a damp cloth using soap and water or use proprietary upholstery shampoo. For deeper cleaning use steam or professionally dry clean.

# Relate

A dense directional weave that unites two different unicoloured yarns which seemingly melt together.

CLASS C

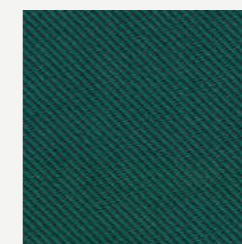
## KVADRAT - RELATE



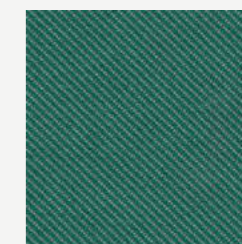
991



821



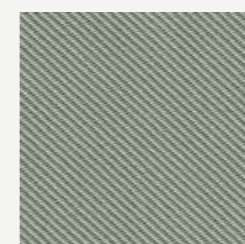
981



961



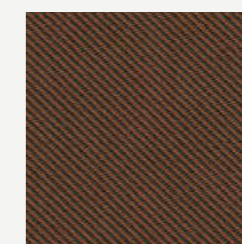
941



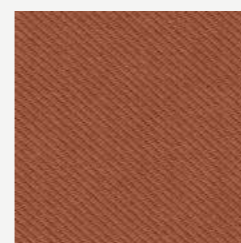
921



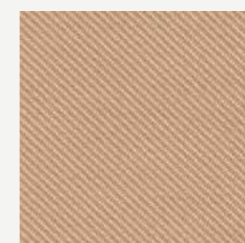
441



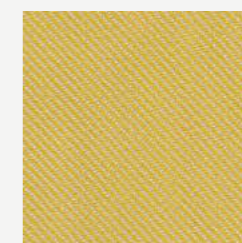
271



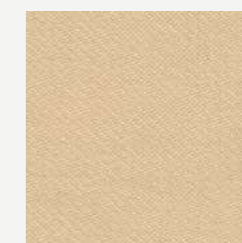
461



221



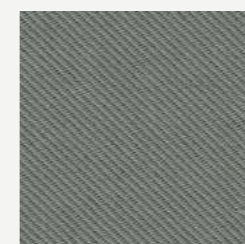
431



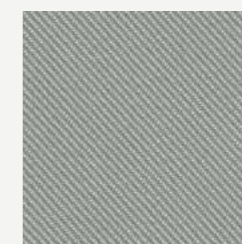
401



161



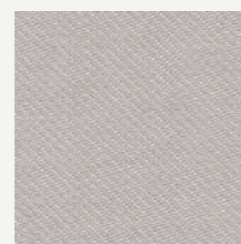
151



111



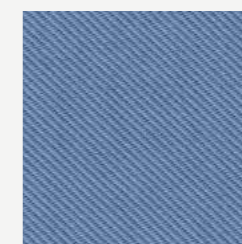
121



101



201



741



711

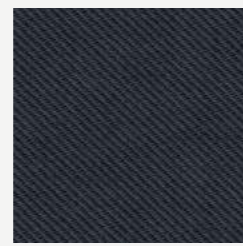
## KVADRAT - RELATE



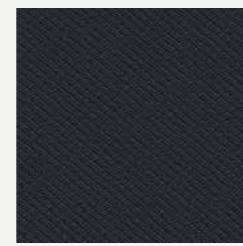
771



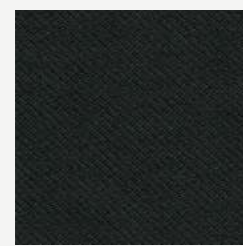
881



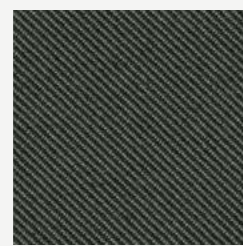
691



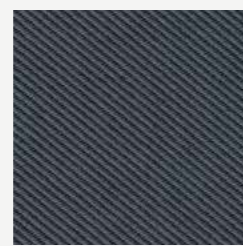
791



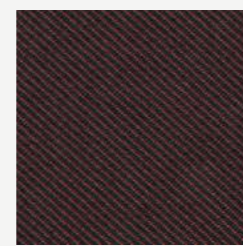
191



181



171



381



641



671



571



561



611



371



341

## KVADRAT - RELATE

### PRODUCT SPECIFICATIONS

Application	Offices, hotels, institutions, domestic use. Great durability. In accordance with California AB2998 or similar regulation in other states of North America, this product should not be used for residential upholstery in USA.
Composition	100% Trevira CS
Width	App. 55 inches (140 cm).
Weight	App. 14.4 oz/ly (450 g/lin.m).
Abrasion	App. 80,000 rubs acc. to the Martindale method. EN ISO 12947.
Flammability	FAR 25.853 • AS/NZS 3837 class 2 • CAN ULC S109 • BS 5852 part 1 with treatment • IMO FTP Code 2010 Part 5 • GB 8624 B1 • ASTM E84 Class A Unadhered • AS/NZS 1530.3 • UNI 9175 1IM • UNI 9177 Classe 1 • BS 5867 part 2 type B • ASTM E84 Class B Adhered • IMO FTP Code 2010 Part 8 • ÖNORM B1/Q1 • NF P 92 507 M1 • BS 7176 Low Hazard • EN 1021-1/2 • CAN ULC S102 • SN 198 898 5.2 • EN 13501-1, B-s1, d0 • DIN 4102 B1 • US Cal. Bull. 117-2013 • NFPA 701 • BS 5852 Crib 5 • NF D 60 013
Light Fastness	(ISO) 5-7. Pilling (EN ISO) 4-5. Fastness to rubbing (ISO) dry 4-5, wet 4-5.
Fastness to Rubbing	Dry note 4-5 ISO 105-X12, Wet note 4-5 ISO 105-X12
Sound Absorption	(EN ISO 354) 0.50/Class D (flat), 0.70/Class C (waved).
Airflow	2241 Pa s/m. EN 29053
Pilling	Note 4-5, EN ISO 12945
Guarantee	10 Years
Physical properties	Pilling Class 4-5 Breaking Strength warp 276 / weft 295 lbs. Seam Slippage warp 83 / weft 89 lbs.
Environmental benefits	EU Ecolabel compliant No use of halogen-based flame retardants (incl. brominated and chlorinated) Free of intentionally added PFAS Mono-material designed for circularity REACH compliant Californian Proposition 65 list compliant LBC Red list compliant
Green building certificates	Greenguard Gold: Low chemical emission Environmental Product Declaration (EPD): 3rd Party Verified. ISO 14025 & EN 15804. Developed in accordance with the European standard EN 15804+A2. Health Product Declaration (HPD): Declaring textile content and substance

#### Care

Please see the ISO symbols. Vacuum clean frequently, ideally every week if fixed covers. Remove stains as soon as they occur, with clean warm water or sparkling water. Extraction clean when necessary. Extraction cleaning might dissolve water-based glue. Pay attention to temperature and amount of cleaning fluid. Also washable at 60-80°C, half wash load. Drip drying. Mount in moist condition. Shrinkage app. 2% at 60°C. Be aware of increased shrinking and creasing the higher the temperature.



New\*

# Techni-colour

Tactile melange upholstery woven from locally sourced wool, defined by a specially developed colour system and enhanced softness, creating subtle surface movement.

CLASS C

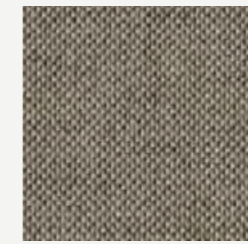
New\*



## KVADRAT - TECHNICOLOUR



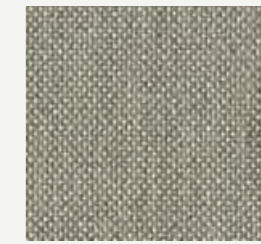
220



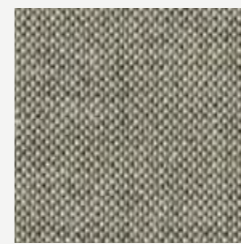
230



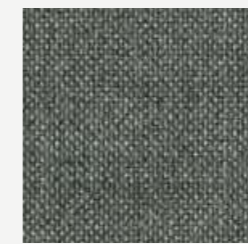
250



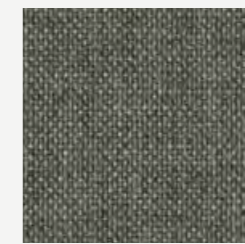
110



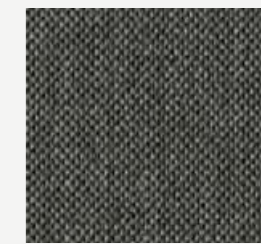
120



140



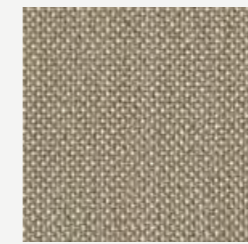
150



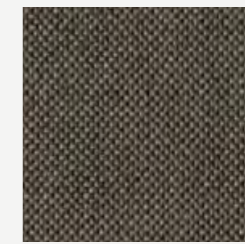
160



200



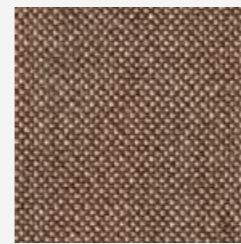
210



260



340



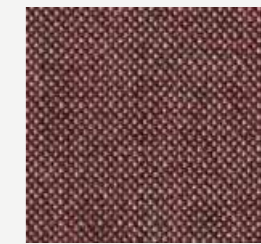
520



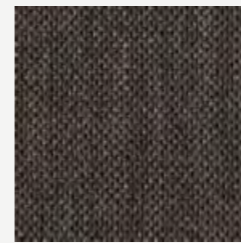
550



620



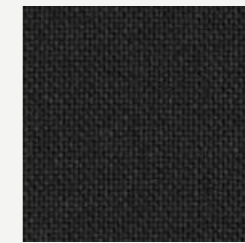
650



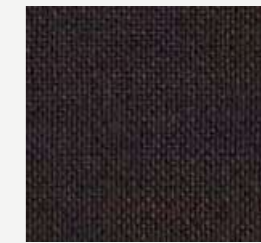
360



370



190

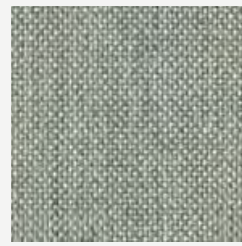


690

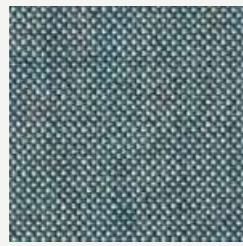
341

Colors may slightly vary due to photographic lighting sources or your monitor settings.

## KVADRAT - TECHNICOLOUR



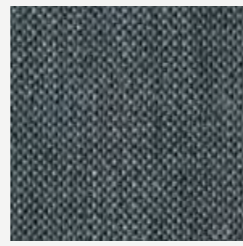
810



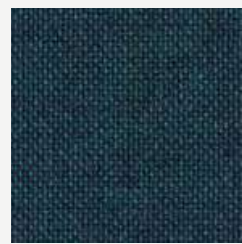
820



830



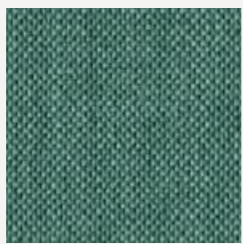
860



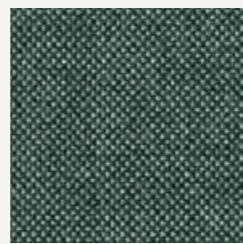
870



890



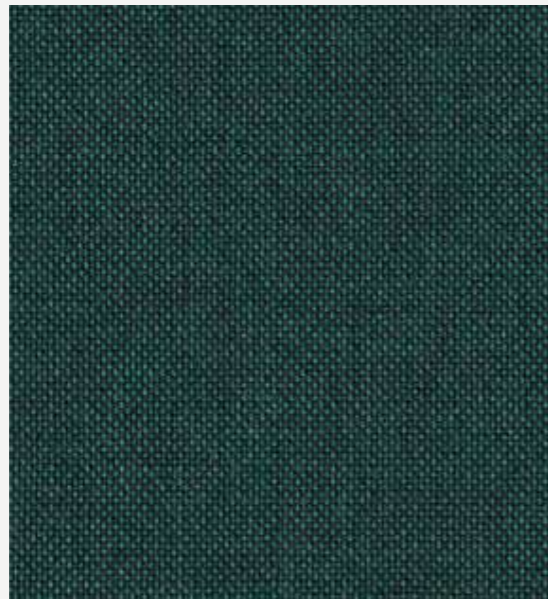
930



940



990



970

## KVADRAT - TECHNICOLOUR

### PRODUCT SPECIFICATIONS

Application	Offices, hotels, institutions, domestic use. Great durability.
Composition	100% British wool, worsted
Width	App. 140 cm, 55 inches
Weight	App. 430 g/lin.m, 14 oz/ly
Abrasion	App. 80.000 Martindale rubs, EN ISO 12947
Flammability	AS/NZS 3837 class 2 • BS 5867 part 2 type B with treatment • SN 198 898 5.3 with treatment • ASTM E84 Class A Unadhered • BS 5852 crib 5 with treatment • AS/NZS 1530.3 • UNI 9175 11M • IMO FTP Code 2010 Part 8 • BS 5852 part 1 • BS 7176 Low Hazard • EN 1021-1/2 • ASTM E84 Class A Adhered • US Cal. Bull. 117-2013 • NF D 60 013
Light Fastness	Note 6-7 ISO 105-B02
Fastness to Rubbing	Dry note 4-5 ISO 105-X12, Wet note 3-5 ISO 105-X12
Seam slippage	Seam parallel to warp: 10.0 mm parallel to weft: 8.1 mm, EN ISO 13 936-2 180 Newton
Airflow	301 Pa s/m EN 29053
Pilling	Note 4, EN ISO 12945
Guarantee	10 Years
Physical properties	Pilling Class 4 Breaking Strength warp 133 / weft 131 lbs. Seam Slippage warp 26 / weft 24 lbs.
Environmental benefits	EU Ecolabel compliant Free of intentionally added PFAS Mono-material designed for circularity REACH compliant Californian Proposition 65 list compliant LBC Red list compliant Healthier Hospitals compliant
Green building certificates	Greenguard Gold: Low chemical emission Health Product Declaration (HPD): Declaring textile content and substance

#### Care

Vacuum clean frequently, ideally every week if fixed covers. Remove stains as soon as they occur, with clean warm water or sparkling water. Extraction clean when necessary. Extraction cleaning might dissolve water-based glue. Pay attention to temperature and amount of cleaning fluid. Disinfection, see kvadrat.dk



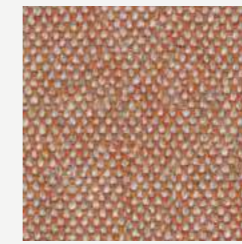
# Main Line Flax

A new inherently flame retardant fabric from sustainable sources with strong, long and smooth fibres.

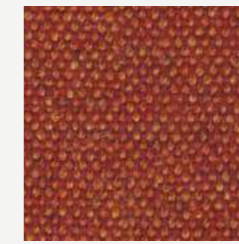
## CAMIRA - MAIN LINE FLAX



ALPERTON  
MLF43



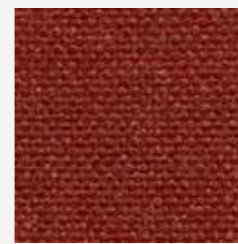
LAMBETH  
MLF08



LEYTON  
MLF13



BALHAM  
MLF44



BARKING  
MLF45



ALDGATE  
MLF01



KILBURN  
MLF06



PARSONS  
MLF14



BLACKWALL  
MLF46



NORTHFIELDS  
MLF40



BARBICAN  
MLF03



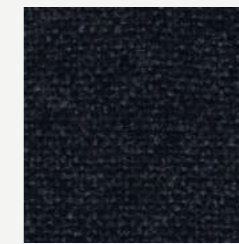
BRIXTON  
MLF47



CHIGWELL  
MLF48



EMBANKMENT  
MLF50



TOWER  
MLF36



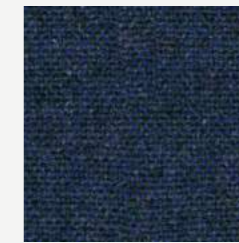
WATERLOO  
MLF21



EPPING  
MLF51



CLAPHAM  
MLF49



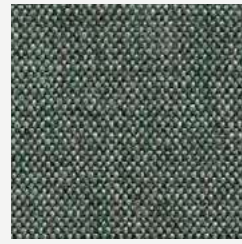
BROMPTON  
MLF35



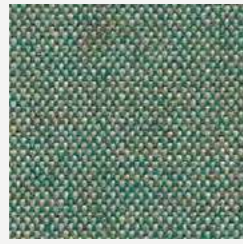
VICTORIA  
MLF19

CLASS C

## CAMIRA - MAIN LINE FLAX



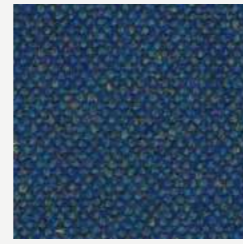
WESTMINSTER  
MLF22



BAYSWATER  
MLF24



STANMORE  
MLF37



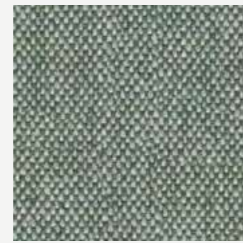
PIMLICO  
MLF34



HOLBORN  
MLF05



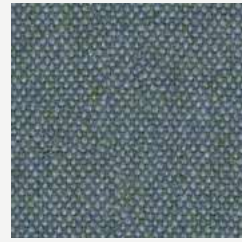
NEWBURY  
MLF10



MONUMENT  
MLF09



GREENWICH  
MLF52



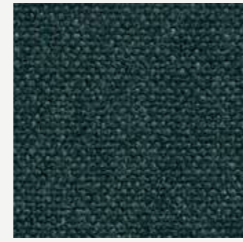
BETHNAL  
MLF25



HARROW  
MLF54



HORNCHURCH  
MLF55



HAMPSTEAD  
MLF53



GREENFORD  
MLF32



TUFNELL  
MLF18



FARRINGDON  
MLF29



KENTISH  
MLF56



MOORGATE  
MLF57



WOODFORD  
MLF67



GOLDHAWK  
MLF31



TOOTING  
MLF17

## CAMIRA - MAIN LINE FLAX



PERIVALE  
MLF59



STOCKWELL  
MLF15



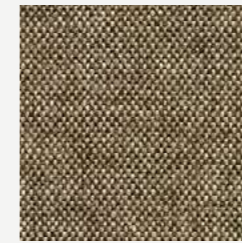
KENSINGTON  
MLF07



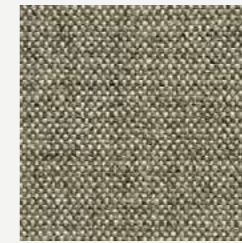
MORDEN  
MLF12



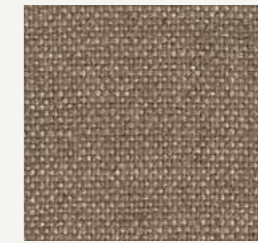
PINNER  
MLF60



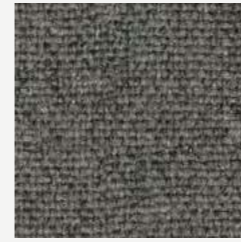
BANK  
MLF23



ARCHWAY  
MLF02



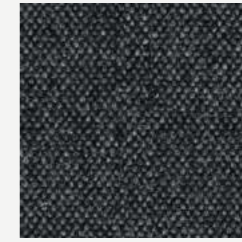
REDBRIDGE  
MLF61



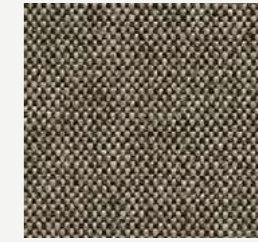
CAMDEN  
MLF26



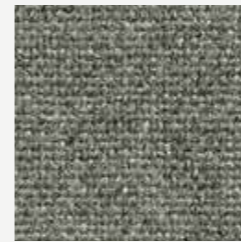
RICHMOND  
MLF62



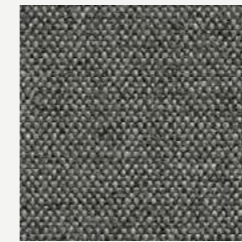
TEMPLE  
MLF16



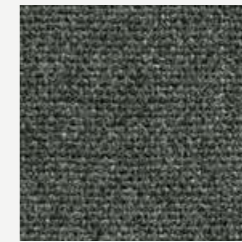
SHADWELL  
MLF63



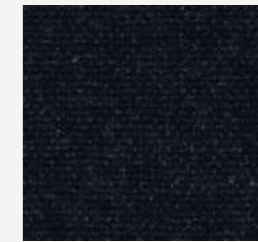
STRATFORD  
MLF64



WATFORD  
MLF65



WHITECHAPEL  
MLF66



EDWARE  
MLF28

## CAMIRA - MAIN LINE FLAX



UPMINSTER  
MLF20



Colors may slightly vary due to photographic lighting sources or your monitor settings.

## CAMIRA - MAIN LINE FLAX

### PRODUCT SPECIFICATIONS

Application	Task Seating / Soft Seating / Curtains
Composition	75% Virgin Wool, 25% Flax
Environmental	Certified to the EU Ecolabel Certified to Indoor Advantage™ "Gold" Rapidly renewable and compostable. Made from wool and bast fibre.
Width	140 cm minimum
Weight	437 g/m2 ±5%
Abrasion Resistance	Heavy duty / 10 year guarantee. Independently certified to ≥50,000 Martindale cycles
Flammability	EN 1021 - 1&2 (cigarette & match), BS 7176 Low Hazard, BS 5852 Ignition Source 5 BS 7176 Medium Hazard, NF D 60-013, ÖNORM B 3825 & A 3800-1 (58kg/m3 CMHR Foam) UNI 9175 Classe 1 IM, BS 5867-2: Type B Curtains & Drapes, IMO FTP Code (Part 8) The Furniture and Furnishing (Fire) (Safety) Regulations 1988 (Domestic Cigarette and Match)
Light Fastness	5 (ISO 105 - B02)
Fastness to Rubbing	Wet: 3, Dry: 4 (ISO 105 - X12)
Guarantee	10 Years

#### Cleaning

Vacuum regularly. Wipe with a damp cloth using soap and water or use proprietary upholstery shampoo.  
For deeper cleaning use steam or professionally dry clean.

Colors may slightly vary due to photographic lighting sources or your monitor settings.

# Fox

A selection that takes its elegance from calm and simple colours and makes a difference with its texture.

CLASS C

## FIDIVI - FOX



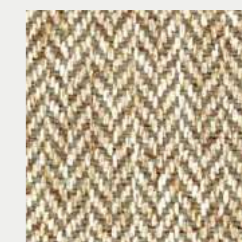
9622



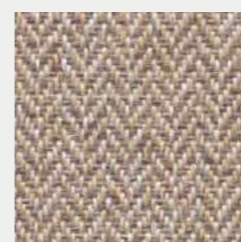
9107



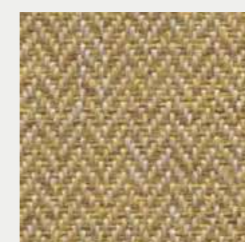
9113



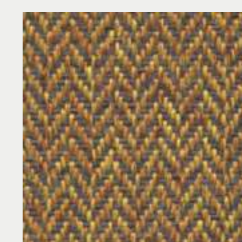
9202



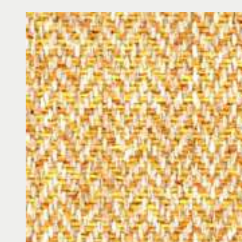
9108



9114



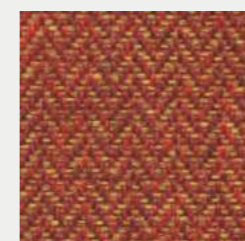
9302



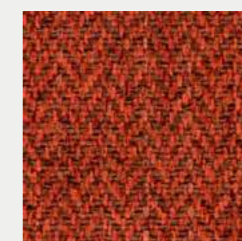
9203



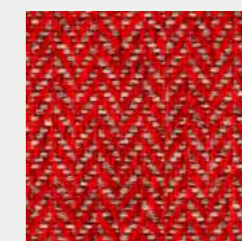
9322



9407



9312



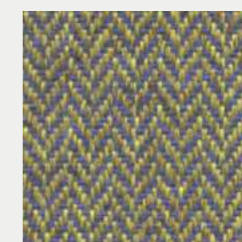
9412



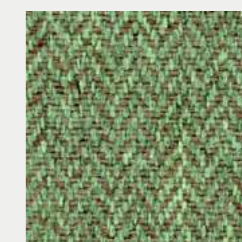
9402



9217



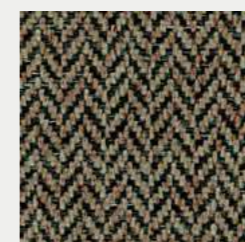
9706



9702



9705



9212



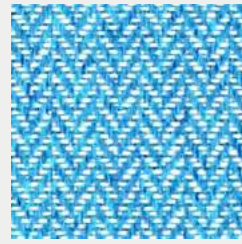
9106



9616

# FABRIC & LEATHER

## FIDIVI - FOX



9601



9604



9602



9612



9215



9205



9501



9504



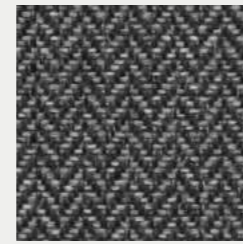
9109



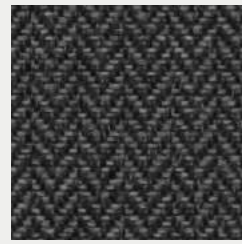
9632



9805



9803



9804



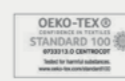
9703

Colors may slightly vary due to photographic lighting sources or your monitor settings.

## FIDIVI - FOX

### PRODUCT SPECIFICATIONS

Description	Yarn dyed 2 color melange fabric. Wool handtouch, fishbone design, in 22 colorways	
Application	Office, Contract	
Weight	525 ± 5 % g/ml 350 ± 5 % g/m <sup>2</sup>	
Height	150 ± 2 % cm	
Composition	100% Polyester Trade Mark Trevira CS	
Abrasion Resistance	ISO 12947/2 120.000 ± 10 % Rubs	
Light Fastness	ISO 105-B02 6 (blue scale) Tolerance: from 5 to 8	
Fastness to Rubbing	ISO 105-X12 4/5 (grey scale) Tolerance: from 4 to 5	
Pilling (2000 rubs)	ISO 12945-2 5 Tolerance: from 4 to 5	
Acoustic Performances	ISO 9053 (Air flow)	
Fire Resistance	UNI 9174 Class 1 can meet UNI 9175 Class 1 IM can meet DIN 4102 Class B1 NF P 92 501-7 Class M1 NF D 60013 Class AM18 can meet EN 1021-1 & 2 BS 5852 Crib 5 BS 7176 Medium Hazard EN 13773 Class 1 can meet OENORM 3800-1 Class B1,Q1,TR1 can meet California TB 117:2013 can meet USA NFPA 701 can meet USA NFPA 260 can meet IMO Part 8 Upholstery	Will also pass other flammability standards. Flame retardant performance is dependent upon the foam used.
Certifications	Oekotex Euflower - Ecolabel	
Warranty	5 Years	
Cleaning and Washing		



Colors may slightly vary due to photographic lighting sources or your monitor settings.

# Laser J

The intense fabric experience comes with its attentive design.

CLASS C

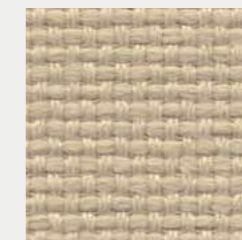
## FIDIVI - LASER J



0001



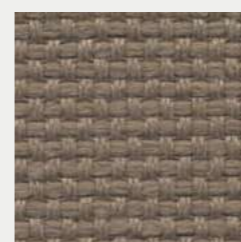
1049



1014



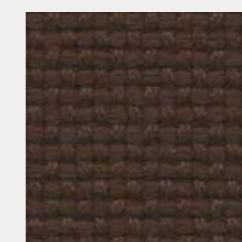
1003



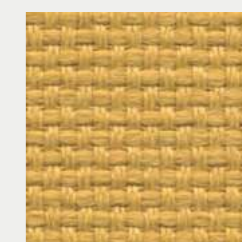
8006



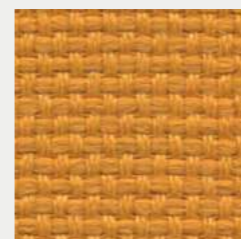
2048



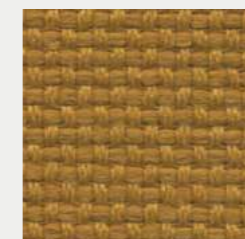
2036



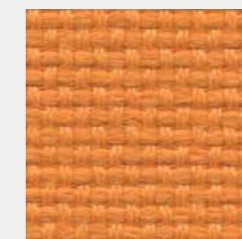
3009



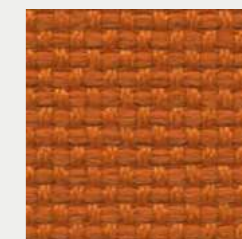
3004



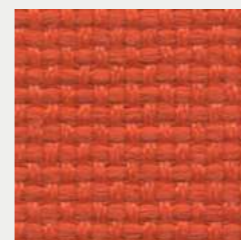
3081



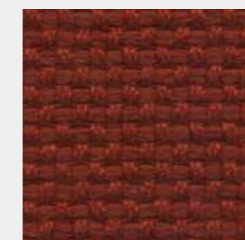
3094



3082



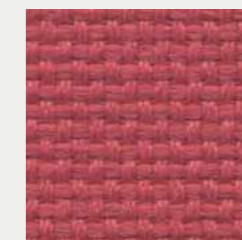
3012



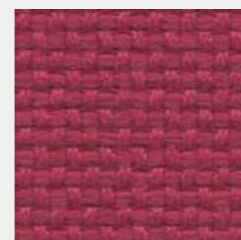
4017



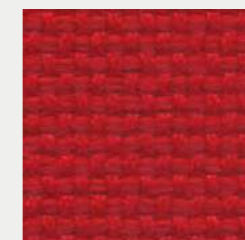
4079



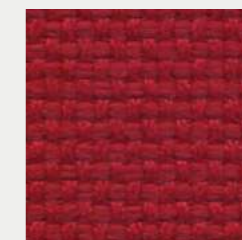
4073



4024



4021



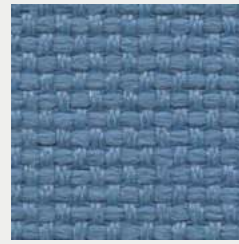
4011



6083

# FABRIC & LEATHER

## FIDIVI - LASER J



6020



6071



6098



5096



5003



7025



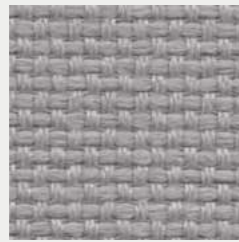
7021



8015



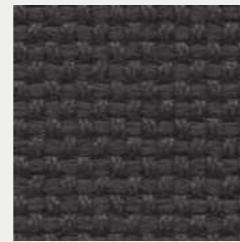
7014



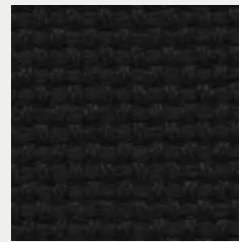
8027



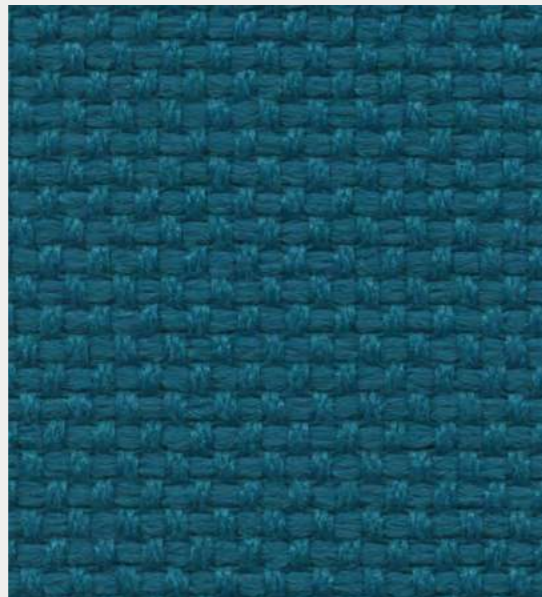
8078



8017



8033



6075

Colors may slightly vary due to photographic lighting sources or your monitor settings.

## FIDIVI - LASER J

### PRODUCT SPECIFICATIONS

Description	Fabric in 34 united colors	
Application	Office, Contract	
Weight	735 ± 5 % g/ml 525 ± 5 % g/m <sup>2</sup>	
Height	140 ± 2 % cm	
Composition	100% Polyester Trevira CS	
Abrasion Resistance	ISO 12947/2 150.000 ± 10 % Rubs	
Light Fastness	ISO 105-B02 6 (blue scale) Tolerance: from 5 to 8	
Fastness to Rubbing	ISO 105-X12 4/5 (grey scale) Tolerance: from 4 to 5	
Pilling (2000 rubs)	ISO 12945-2 5 Tolerance: from 4 to 5	
Acoustic Performances	ISO 9053 (Air flow) ISO 354 (Reverberation Room), 0,8	
Fire Resistance	UNI 9174 Class C1 UNI 9175 Class 1 IM DIN 4102 Class B1 NF P 92 501-7 M1 NF D 60013 Class AM18 EN 1021-1 & 2 BS 5852 Crib 5 BS 7176 Class Medium Hazard EN 13773 Class 1 can meet OENORM 3800-1 Class B1,Q1,TR1 can meet California TB 117:2013 USA NFPA 701 can meet USA NFPA 260 can meet IMO Part 8 Upholstery	Will also pass other flammability standards. Flame retardant performance is dependent upon the foam used.
Stain Repellent Treatment	Trademark Trevira B1 certificate MOQ 250m	
Certifications	Oekotex Euflower - Ecolabel	
Warranty	5 Years	
Cleaning and Washing		



Colors may slightly vary due to photographic lighting sources or your monitor settings.

# Silvertex

A serene and dynamic touch meets with high quality artificial leather thanks to its broad spectrum.

CLASS C

## SPRADLING - SILVERTEX



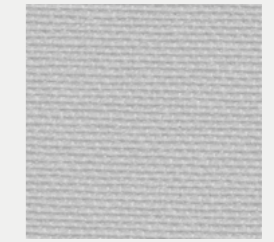
CAMEL  
122-2105



SKYLIGHT  
122-2103



CORAL  
122-2102



ALUMINIUM  
122-2101



TEAL  
122-2100



LOTUS  
122-2099



ROSÉ  
122-2098



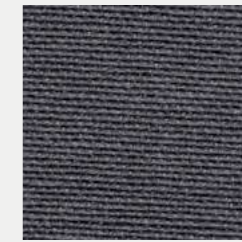
ORCHID  
122-2097



TOMATO  
122-2096



GRENADINE  
122-2095



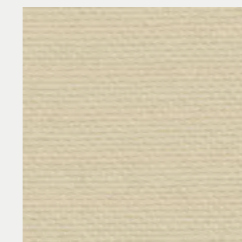
PETROL  
122-2094



SQUASH  
122-2093



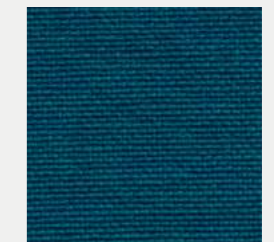
AVOCADO  
122-2092



ICE CREAM  
122-2090



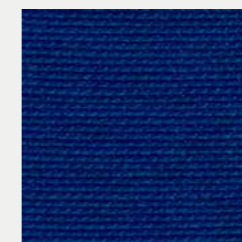
WHITE  
122-2089



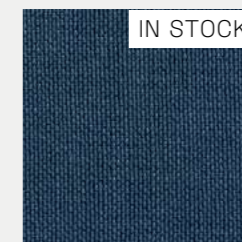
TURQUOISE  
122-3001



BALTIC  
122-3066



DELFT  
122-3067



JET  
122-3068



SAPPHIRE  
122-3007

# FABRIC & LEATHER

## SPRADLING - SILVERTEX



FOREST  
122-5063



BOTTLE  
122-5010



BASIL  
122-5020



PISTACHO  
122-5008



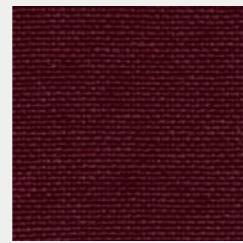
CELERY  
122-5019



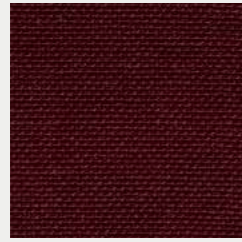
SAGE  
122-5009



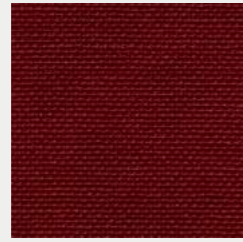
AUBERGINE  
122-7001



RASPBERRY  
122-2016



RUBIN  
122-6004



WINE  
122-2064



UMBER  
122-1014



RED  
122-2011



SUNKIST  
122-2012



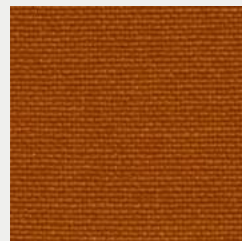
MANDARIN  
122-6061



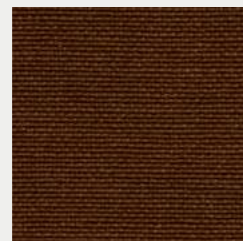
SAFRAN  
122-6065



MELON  
122-6062



ORANGE  
122-0013



LUGGAGE  
122-0073



ICE  
122-4004



CREAM  
122-1077

## SPRADLING - SILVERTEX



SISAL  
122-1051



CHAMPAGNE  
122-1078



BEIGE  
122-1010



MACADAMIA  
122-0001



SANDSTONE  
122-0002



TAUPE  
122-0009



SHIITAKE  
122-4012



METEOR  
122-4024



MOCCA  
122-0005



PLATA  
122-4001



STERLING  
122-4011



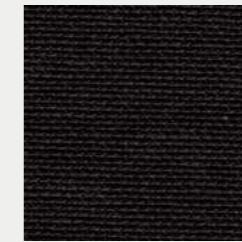
TITANIUM  
122-4010



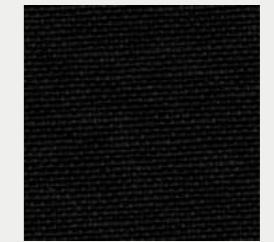
STORM  
122-4002



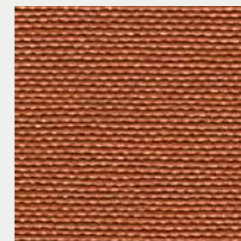
GRAPHITE  
122-4003



CARBON  
122-9002



BLACK  
122-9001



BRICK  
122-9243



DEEPEA  
122-3352



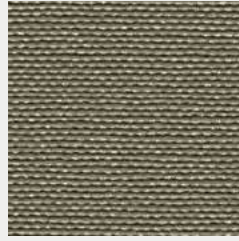
GOJI  
122-7251



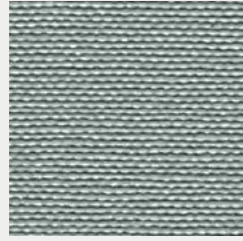
HUNTER  
122-5468

# FABRIC & LEATHER

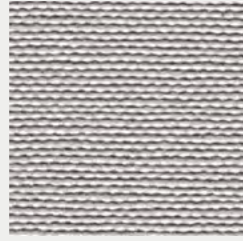
## SPRADLING - SILVERTEX



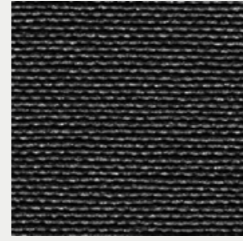
JUNGLE  
122-5544



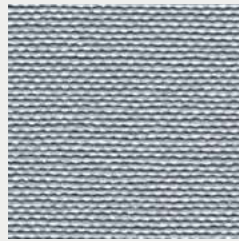
MIZZLE  
122-6434



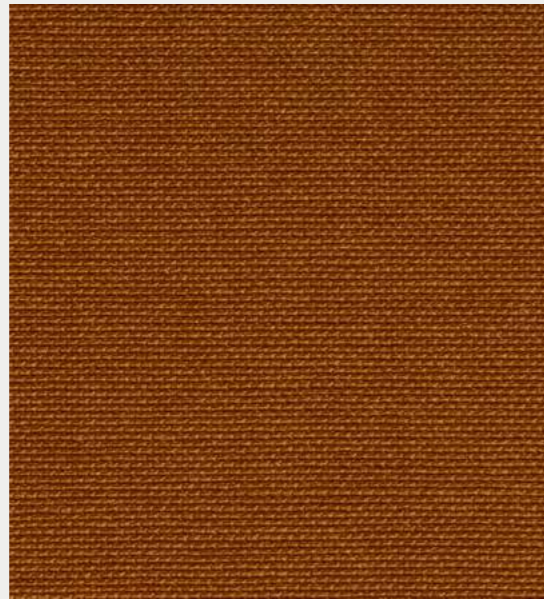
SMOG  
122-5039



WHALE  
122-3375



WINDY  
122-2318



COBRE  
122-2003

## SPRADLING - SILVERTEX

### PRODUCT SPECIFICATIONS

Composition:	Topcoat :Vinyl   Backing; 100% Polyester Hi-Loft2™
Weight:	685 gr/m2
Width:	min. 137 cm
Roll size:	+/- 30m
Abrasion:	>300.000 cycles (MARTINDALE)
Flame retardancy*:	EN 1021 Part 1 & 2   DIN 4102 B2   MED   ECE R 1 18.02 Anx. 6,7 & 8 IMO 2010 FTP Part 8   UNI 9175 Classe I.IM   UNE 23.727-90 IR/M.2 NF P 92-503 / M2   EN 71-2:2006+ A1:2007   FMVSS 302
Cold Crack:	-29°C
UV-Resistance:	ISO 105 B02: ≥ 7/8 (BlueWool Scale)   ISO 104 B04: ≥ 4/5 (Grey Scale)
*This term and any corresponding data refer to the typical performance in the specific tests indicated and should not be construed to imply the behavior of this or any other material under actual fire conditions.	
<b>FINISHES AND TREATMENTS PERMABLOK3®</b>	
Virucidal Activity	ISO 18184:2019: Coated Fabrics treated with PERMABLOK3® are proven to reduce the presence of Coronavirus** by more than 90% within one hour of contact. ISO 21702:2019: All the Coated fabrics treated with PERMABLOK3® are capable of reducing the Coronavirus** activity by 99,9% within 24 hours of exposure on the surface. ISO 22196:2011. Value of antibacterial*** activity R>2.
Bacteriostatic Properties:	** Testing was conducted with material exposed to Feline Coronavirus (same coronaviridae family, structures and mechanisms similar to SARS-Cov2) ** Testing was conducted with material exposed to Staphylococcus aureus, Staphylococcus aureus (MRSA), Escherichia coli and Klebsiella pneumoniae.
WARRANTY	5 Years. Terms and conditions apply, Warranty conditions are displayed on our website.
CARE AND CLEANING	<ul style="list-style-type: none"> <li>The vinyl should be cleaned periodically in order to maintain its appearance and prevent build-up of dirt and contaminants.</li> <li>Any stain, spills, or soiling should be cleaned up promptly to prevent the possibility of permanent staining.</li> <li>Vinyl fabrics treated with PERMABLOK3® require a minimum of maintenance to retain their good looks. Use soft soapy solutions or special cleaning products for vinyl fabrics to remove stains on the surface of the material. Remove only with a damp white cloth.</li> <li>Lacquers, strong cleaners, detergents, xylene-based solutions, acetone, or MEK cause immediate damage and contribute to the deterioration of the material. The use of such cleaners is at the owner's risk.</li> </ul>

Certain clothing and accessory dyes (such as those used on denim jeans) may migrate to lighter colors. This phenomenon is increased by humidity and temperature and is irreversible. SPRADLING International GmbH, SPRADLING UK Ltd, and EURO SPRADLING S.L.U will not assume responsibility for dye transfer caused by external contaminants and possible permanent staining caused by this phenomenon.

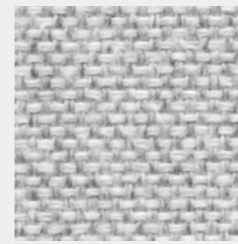
PERMABLOK3® and SILVERTEX® are registered trademarks of Spradling Holdings, Inc.® | Hi-Loft2™ is trademark of Spradling Holdings, Inc.®

# Milano

Combining the feeling of ease and peace with its carefully selected colours.

CLASS B

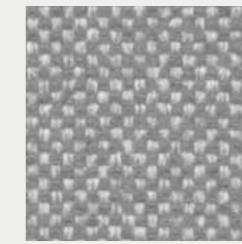
## FIDIVI - MILANO



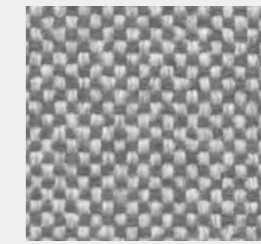
9000



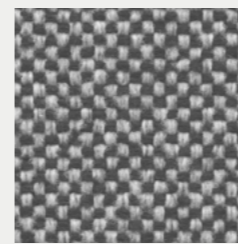
9801



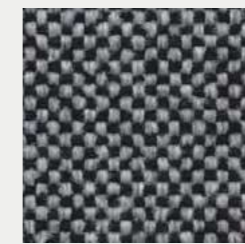
9878



9809



9817



9833



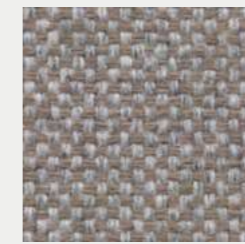
9101



9108



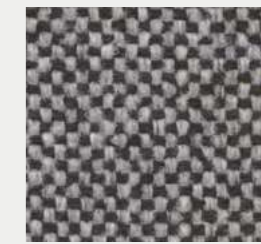
9106



9224



9212



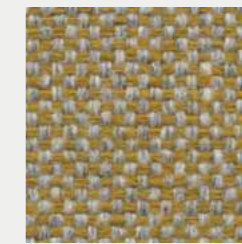
9210



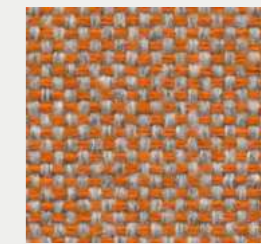
9390



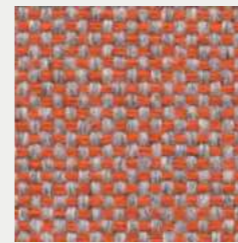
9319



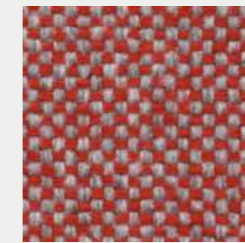
9330



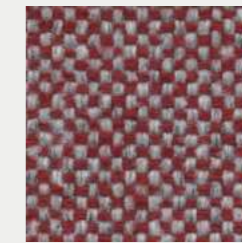
9430



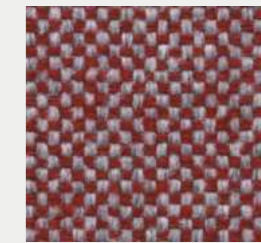
9451



9427



9494



9418

# FABRIC & LEATHER

## FIDIVI - MILANO



9407



9734



9709



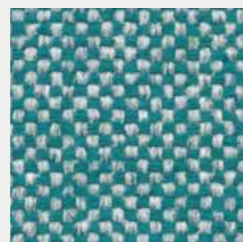
9725



9702



9607



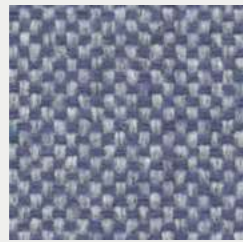
9691



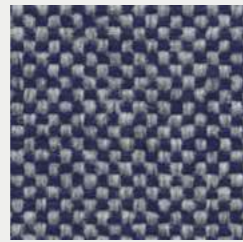
9614



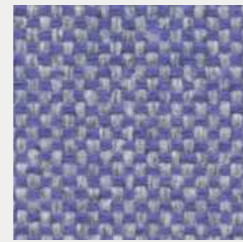
9656



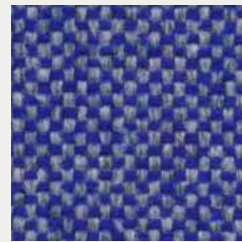
9613



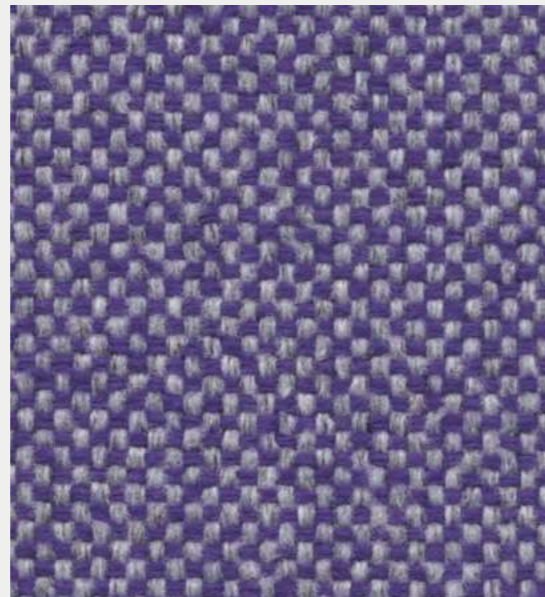
9698



9629



9695



9506

Colors may slightly vary due to photographic lighting sources or your monitor settings.

## FIDIVI - MILANO

### PRODUCT SPECIFICATIONS

Description	Full wool-like appearance and handtouch. 34 yarn dyed combinations	
Application	Office, Luggage, Contract	
Weight	525 ± 5 % g/ml 375 ± 5 % g/m <sup>2</sup>	
Height	140 ± 2 % cm	
Composition	100% Polyester Trevira CS	
Abrasion Resistance	ISO 12947/2 80.000 ± 10 % Rubs	
Light Fastness	ISO 105-B02 6 (blue scale) Tolerance: from 5 to 8	
Fastness to Rubbing	ISO 105-X12 4/5 (grey scale) Tolerance: from 4 to 5	
Pilling (2000 rubs)	ISO 12945-2 5 Tolerance: from 4 to 5	
Acoustic Performances	ISO 354 (Reverberation Room), 0,65	
Fire Resistance	UNI 9174 Class C1 can meet UNI 9175 Class 1 IM can meet DIN 4102 Class B1 NF P 92 501-7 M1 NF D 60013 Class AM18 can meet EN 1021-1 & 2 BS 5852 Crib 5 BS 7176 Class Medium Hazard EN 13773 Class 1 can meet OENORM 3800-1 Class B1,Q1,TR1 can meet California TB 117:2013 can meet USA NFPA 701 can meet USA NFPA 260 can meet IMO Part 8 Upholstery	Will also pass other flammability standards. Flame retardant performance is dependent upon the foam used.
Stain Repellent Treatment	Trademark Trevira B1 certificate MOQ 250m	
Certifications	Oekotex Euflower - Ecolabel	
Warranty	5 Years	
Cleaning and Washing		



Colors may slightly vary due to photographic lighting sources or your monitor settings.

# Roccia

The world's favorite thanks to its perfect harmony of elegance and diversity.

CLASS B

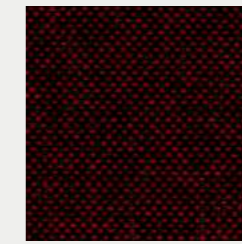
## FIDIVI - ROCCIA



4504



4011



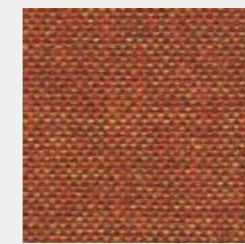
8514



4512



3012



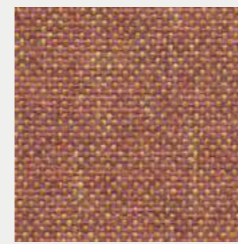
4501



5005



5505



5504



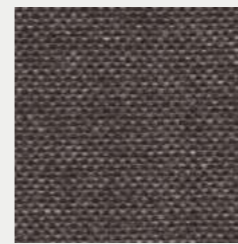
3506



3502



2502



2501



1504



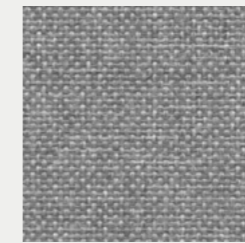
1503



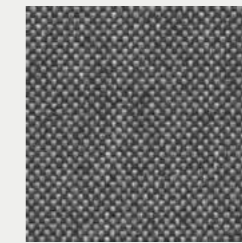
1502



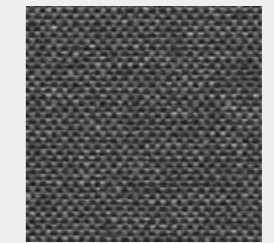
1511



8501



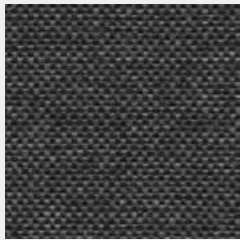
8502



8030

# FABRIC & LEATHER

## FIDIVI - ROCCIA



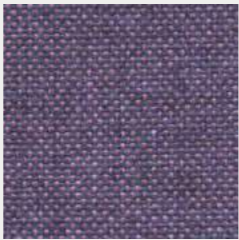
8504



5512



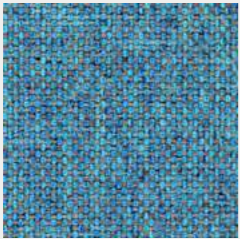
8515



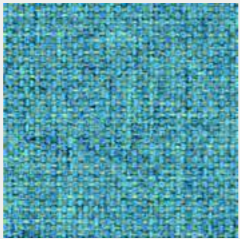
5502



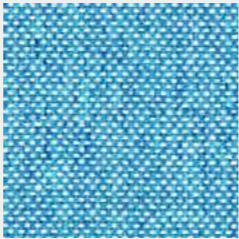
6506



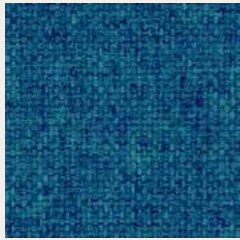
6522



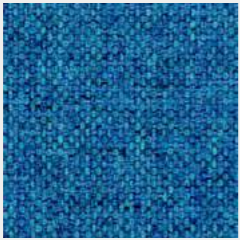
6517



6536



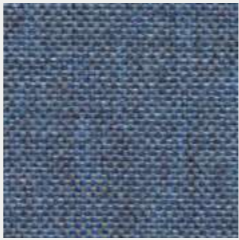
6055



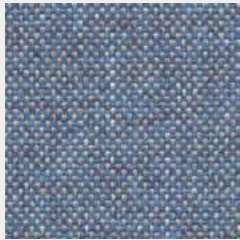
6526



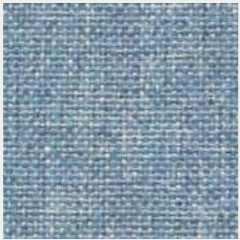
6505



6503



6502



6501



7504



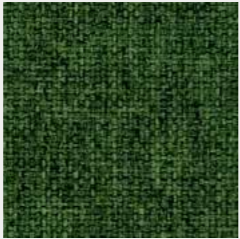
7503



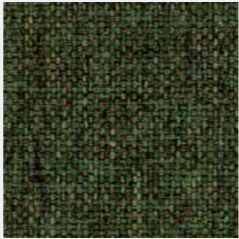
7502



7501



7016

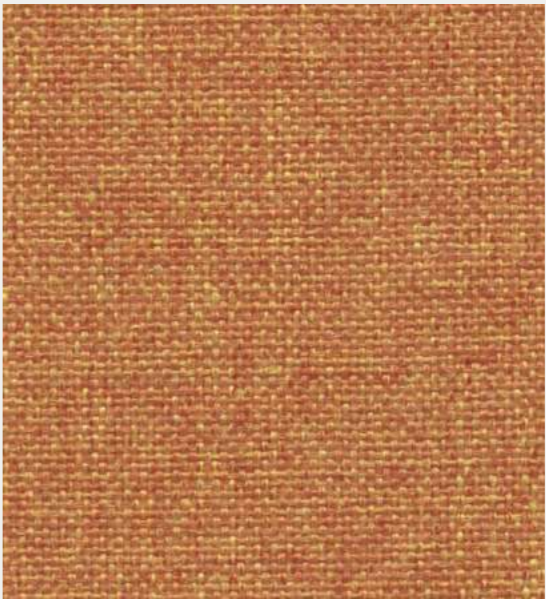


7512

## FIDIVI - ROCCIA



2517



3503

# FABRIC & LEATHER

## FIDIVI - ROCCIA

### PRODUCT SPECIFICATIONS

Description	Yarn dyed 2 color melange fabric. Wool handtouch in 42 natural colorways.	
Application	Office, Contract	
Weight	350 ± 5 % g/ml 250 ± 5 % g/m <sup>2</sup>	
Height	140 ± 2 % cm	
Composition	100% Polyester Trade Mark Trevira CS	
Abrasion Resistance	ISO 12947/2 70.000 ± 10 % Rubs	
Light Fastness	ISO 105-B02 6 (blue scale) Tolerance: from 5 to 8	
Fastness to Rubbing	ISO 105-X12 4/5 (grey scale) Tolerance: from 4 to 5	
Pilling (2000 rubs)	ISO 12945-2 5 Tolerance: from 4 to 5	
Acoustic Performances	ISO 354 (Reverberation Room), 0,6	
Fire Resistance	UNI 9174 Class C1 UNI 9175 Class 1 IM DIN 4102 Class B1 NF P 92 501-7 M1 NF D 60013 Class AM18 EN 1021-1 & 2 BS 5852 CRIB 5 BS 7176 Class Medium Hazard EN 13773 Class 1 can meet OENORM 3800-1 Class B1,Q1,TR1 California TB117 USA NFPA 701 can meet USA NFPA 260 can meet IMO Part 8 Upholstery	Will also pass other flammability standards. Flame retardant performance is dependent upon the foam used.
Certifications	Oekotex Euflower - Ecolabel	
Warranty	5 Years	
Cleaning and Washing		



# Time

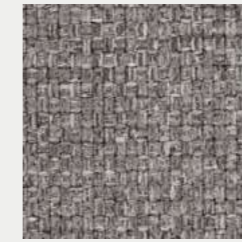
The timeless beauty of charming colours and fresh feelings.

CLASS B

## FIDIVI - TIME



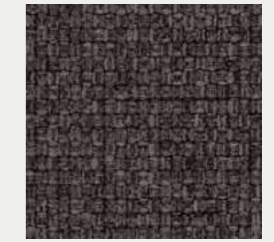
8048



8004



8006



8007



7026



7023



7008



7019



7036



7011



3090



3094



3012



3082



4066



4022



4079



4021



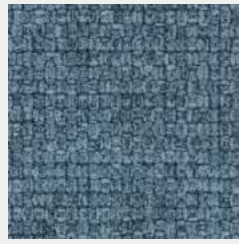
6001



6070

# FABRIC & LEATHER

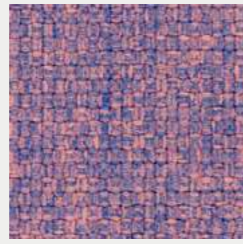
## FIDIVI - TIME



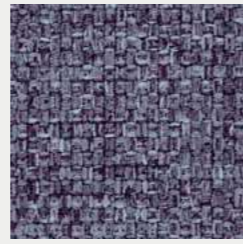
6031



6034



6018



6026



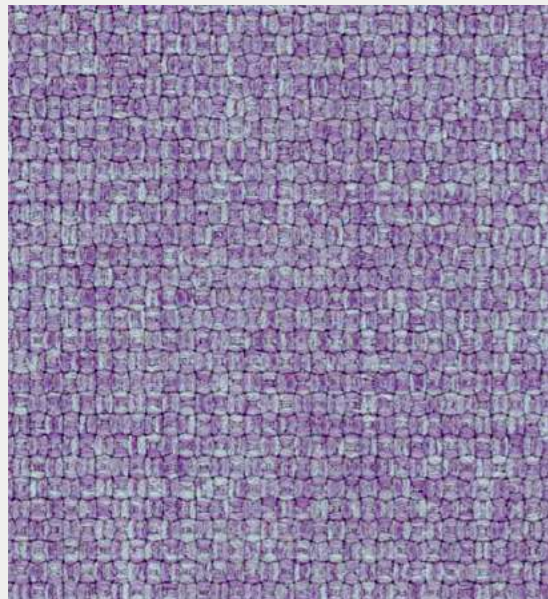
1010



1020



2005



6091

## FIDIVI - TIME

### PRODUCT SPECIFICATIONS

Description	Recycled polyester melange fabric. Piece dyed in 28 colorshades.	
Application	Office, Furniture, Contract	
Weight	490 ± 5 % g/ml 350 ± 5 % g/m <sup>2</sup>	
Height	140 ± 2% cm	
Composition	100% Polyester - Recycled GRS	
Abrasion Resistance	ISO 12947/2 100.000 ± 10% Rubs	
Light Fastness	ISO 105-B02 6 (blue scale) Tolerance: from 5 to 8	
Fastness to Rubbing	ISO 105-X12 4/5 (grey scale) Tolerance: from 5 to 8	
Pilling (2000 rubs)	ISO 12945-2 5 Tolerance: from 5 to 8	
Fire Resistance	UNI 9175 Class 1 IM EN 1021-1 & 2 BS 5852 CRIB 5 part 2 BS 7176 Class Medium Hazard California TB 117-2013	Will also pass other flammability standards. Flame retardant performance is dependent upon the foam used.
Certifications	Oekotex GRS	
Warranty	5 Years	
Cleaning and Washing		

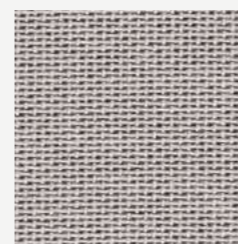


# Autumn

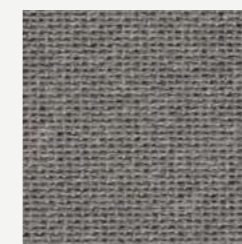
Upholstery textile woven from 100% recycled polyester, defined by a layered weave that offers a soft hand and a nuanced melange colour palette inspired by the transient nature of ageing.

CLASS B

## KVADRAT - AUTUMN



101



131



171



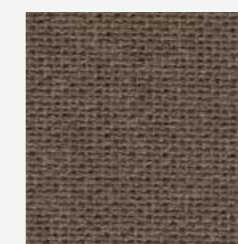
191



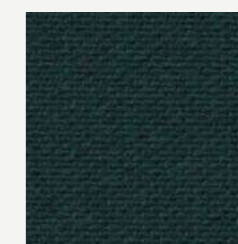
221



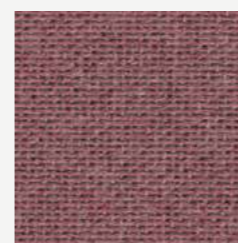
331



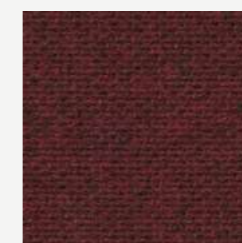
361



971



651



681



751

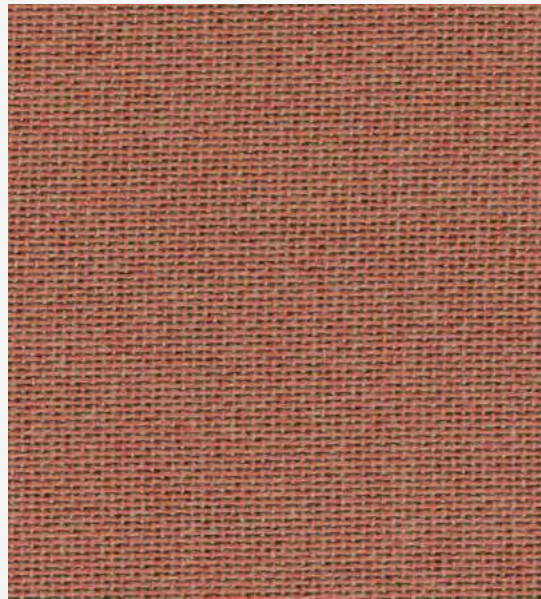


771



791

## KVADRAT - AUTUMN



551

## KVADRAT - AUTUMN

### PRODUCT SPECIFICATIONS

Application	Offices, hotels, institutions, domestic use. Great durability.
Composition	100% recycled polyester
Width	App. 140 cm, 55 inches
Weight	App. 590 g/lin.m, 19 oz/ly
Abrasion	Min. 50.000 Martindale rubs, EN ISO 12947
Flammability	BS 5852 part 1 with treatment • ASTM E84 Class A Unadhered • BS 5852 crib 5 with treatment • SN 198 898 5.2 with treatment • AS/NZS 3837 class 1 • IMO FTP Code 2010 Part 8 • NFPA 701 with treatment • BS 7176 Low Hazard • Önorm B1/Q2 with treatment • EN 1021-1/2 • ASTM E84 Class A Adhered • US Cal. Bull. 117-2013
Light Fastness	Note 6-7 ISO 105-B02
Fastness to Rubbing	Dry note 4-5 ISO 105-X12, Wet note 4-5 ISO 105-X12
Seam slippage	Seam parallel to warp: 4.0 mm parallel to weft: 4.0 m, EN ISO 13 936-2 180 Newton
Airflow	757 Pa s/m
Pilling	Note 4, EN ISO 12945
Guarantee	10 Years
Physical properties	Pilling Class 4 ASTM D4970 Breaking Strength warp 306 / weft 217 lbs. ASTM D5034 Seam Slippage warp 120 / weft 108.5 lbs. ASTM D 4034
Environmental benefits	Complies with EU Ecolabel Free of intentionally added PFAS Mono-material designed for circularity REACH compliant Californian Proposition 65 list compliant LBC Red list compliant Healthier Hospitals compliant
Green building certificates	Greenguard Gold: Low chemical emission Health Product Declaration (HPD): Declaring textile content and substance

#### Care

Vacuum clean frequently, ideally every week if fixed covers. Remove stains as soon as they occur, with clean warm water or sparkling water. Extraction clean when necessary. Extraction cleaning might dissolve water-based glue. Pay attention to temperature and amount of cleaning fluid. Disinfection, see kvadrat.dk

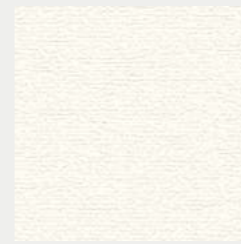


# Fiocco

Featuring a distinctive bouclé texture, it is crafted from 100% Trevira CS polyester, making it an elegant and versatile choice for office and contract applications.

CLASS B

## FIDIVI - FIOCCO



9101



9121



9111



9801



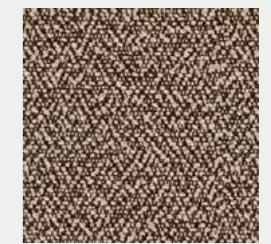
9831



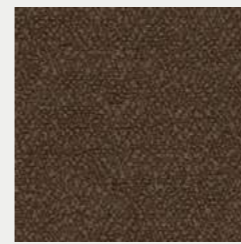
9201



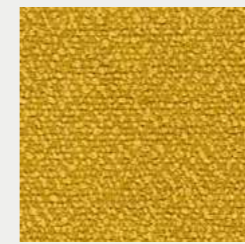
9211



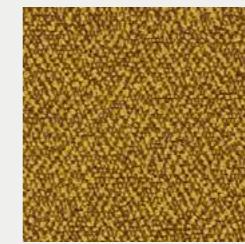
9221



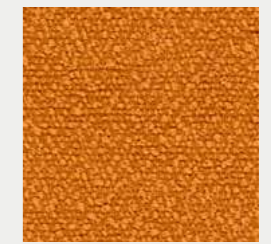
9208



9313



9203



9303



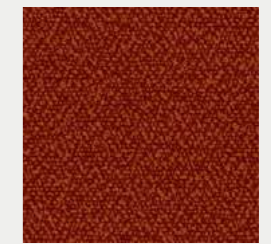
9403



9402



9204



9404



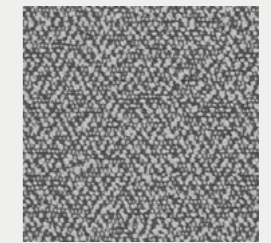
9214



9414



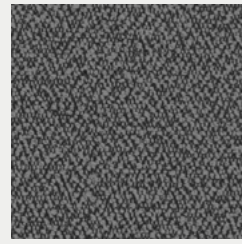
9811



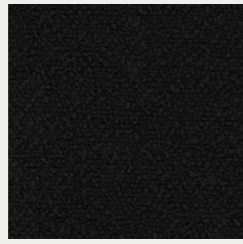
9821

# FABRIC & LEATHER

## FIDIVI - FIOCCO



9818



9808



9616



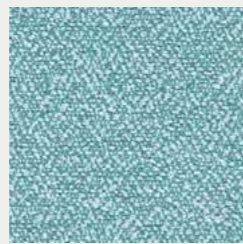
9626



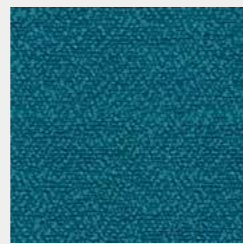
9216



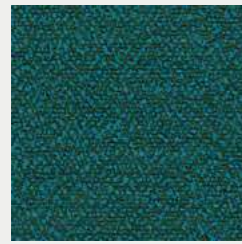
9636



9706



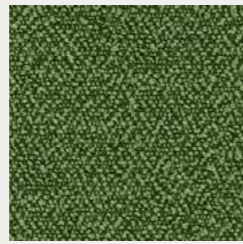
9606



9736



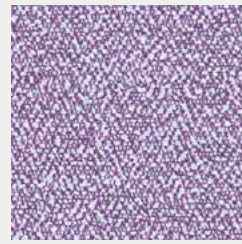
9707



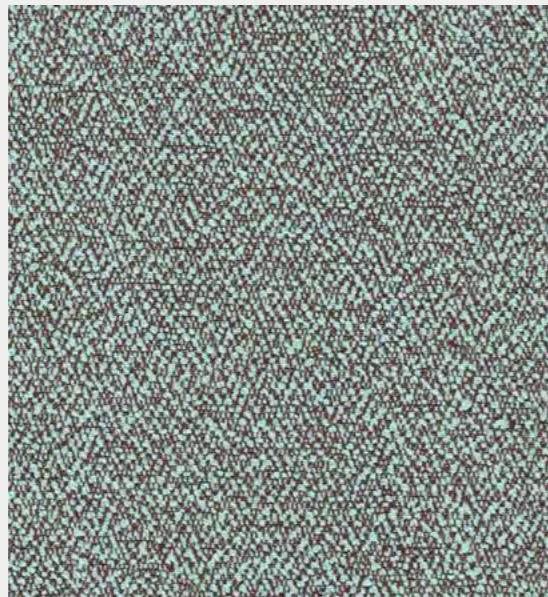
9717



9205



9506



9206

Colors may slightly vary due to photographic lighting sources or your monitor settings.

## FIDIVI - FIOCCO

### PRODUCT SPECIFICATIONS

Description	Slight colour differences between one lot and another have to be considered within commercial tolerance	
Weight	620 ± 5 % g/ml 440 ± 5 % g/m <sup>2</sup>	
Width	140 ± 2 % cm	
Composition	100% POLYESTER TREVIRA CS	
Abrasion Resistance	ISO 12947-2 (Martindale) 120.000 ± 10 % Rubs	
Light Fastness	ISO 105-B02 (Xenotest) 6 (blue scale) Tolerance: from 5 to 8	
Fastness to Rubbing	ISO 105-X12 (Crockmeter) 4/5 (grey scale) Tolerance: from 4 to 5	
Pilling (2000 rubs)	ISO 12945-2 5 Tolerance: from 4 to 5	
Fire Resistance	UNI 9174 - 8456 Class C1 UNI 9175 Class 1 IM DIN 4102 Class B1 NF 92501-7 Class M1 NF D 60013 Class AM18 EN 1021-1 & 2 BS Crib 5 BS 7176 Class Medium Hazard EN 13773 Class 1 OENORM 3800-1 Class B1,Q1,TR1 California TB117 USA NFPA 701 USA NFPA 260 IMO Part 8 Upholstery	Will also pass other flammability standards. Flame retardant performance is dependent upon the foam used.
Certifications	Oekotex Euflower - Ecolabel	
Warranty	5 Years	
Cleaning and Washing		



Colors may slightly vary due to photographic lighting sources or your monitor settings.

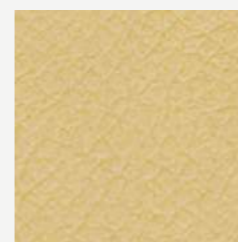
# Vita

ARTIFICIAL LEATHER

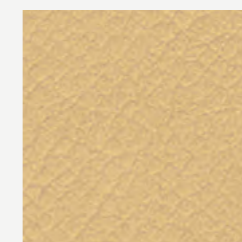
High-quality artificial leather with a subtle surface grain effect and full matt appearance.

CLASS B

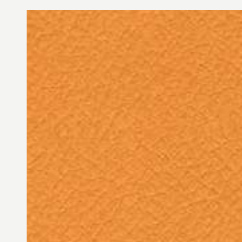
## CAMIRA - VITA



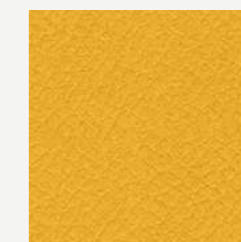
CORNSILK  
ITA37



DAISY  
ITA43



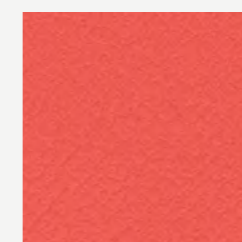
YELLOW  
ITA03



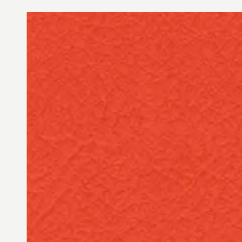
LEMON  
ITA33



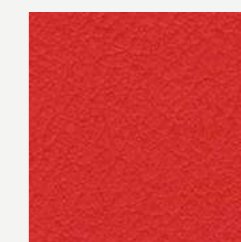
CARROT  
ITA41



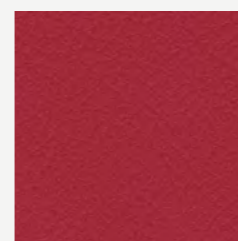
PUNCH  
ITA35



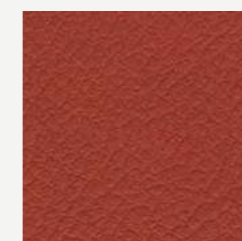
SQUASH  
ITA05



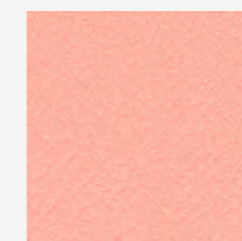
AMPLIFIED  
ITA52



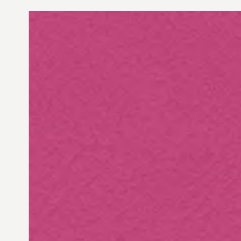
TOMATO  
ITA08



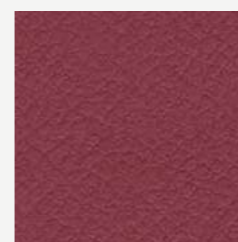
RUST  
ITA11



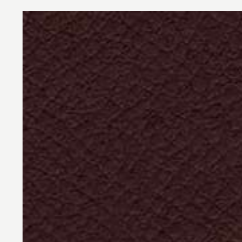
HOLLYHOCK  
ITA51



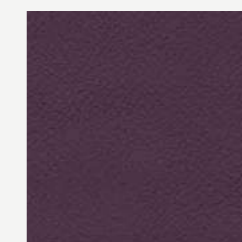
FLAMINGO  
ITA34



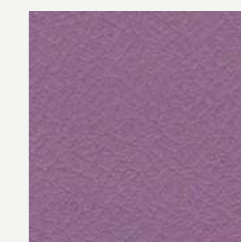
PINK  
ITA20



SIN  
ITA50



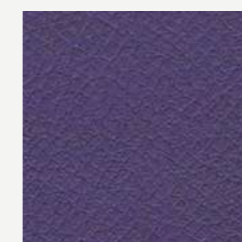
PLUM  
ITA23



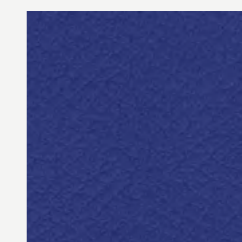
WISTERIA  
ITA49



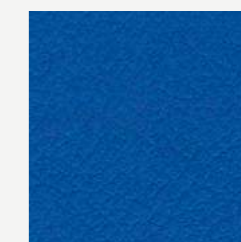
AMETHYST  
ITA17



ENVY  
ITA55



ROCKER  
ITA53



CLASH  
ITA56

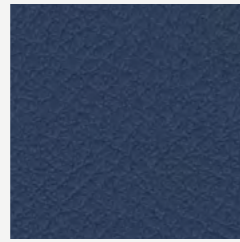
## CAMIRA - VITA



BUBBLES  
ITA36



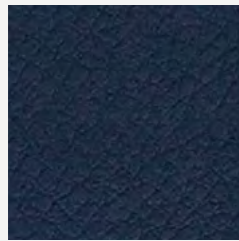
PORCELAIN  
ITA15



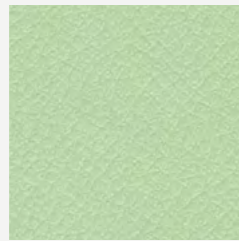
SAIL  
ITA54



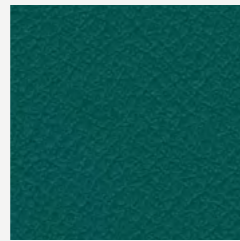
MARINA  
ITA21



NAVY  
ITA22



SURF  
ITA48



BREEZE  
ITA32



WATERFALL  
ITA18



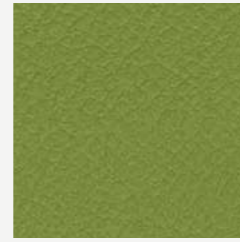
SAPPHIRE  
ITA16



PEACOCK  
ITA19



SPRING  
ITA40



AVOCADO  
ITA06



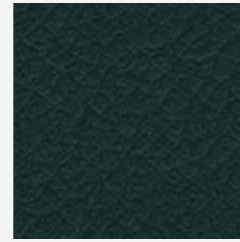
OLIVE  
ITA09



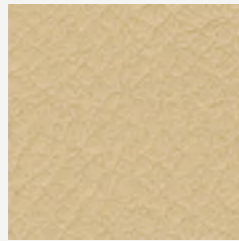
YUCCA  
ITA30



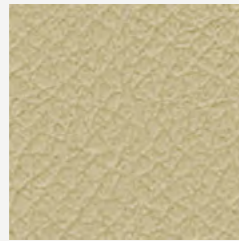
SEAL  
ITA01



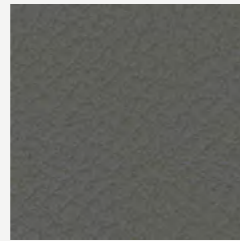
SEAWEED  
ITA31



BONE  
ITA38



SWAN  
ITA42

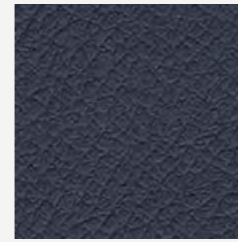


PIGEON  
ITA45



KOALA  
ITA04

## CAMIRA - VITA



HIPPO  
ITA07



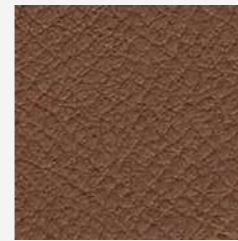
CHIFFON  
ITA44



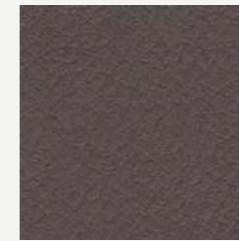
OATMEAL  
ITA02



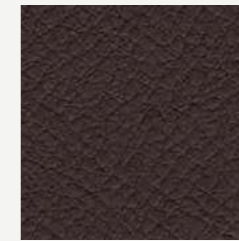
ALPACA  
ITA46



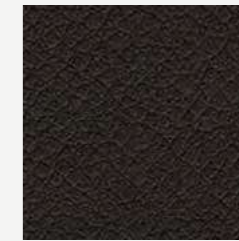
GOLDEN  
ITA39



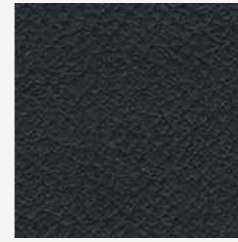
TAUPE  
ITA10



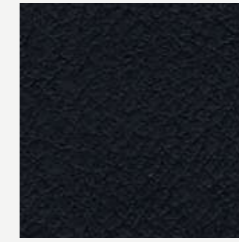
ESPRESSO  
ITA14



AMERICANO  
ITA13



BEETLE  
ITA47



NOIR  
ITA12



WREATH  
ITA29

CAMIRA - VITA



CAMIRA - VITA

PRODUCT SPECIFICATIONS

Application	Task Seating / Soft Seating
Composition	Surface: 98% PVC, 2%. PU Substrate: 100% Cotton
Width	140 cm minimum
Weight	850 g/m2 ±5%
Abrasion Resistance	Heavy duty / 5 year guarantee ISO 5470-2 100,000 rubs (Grade 2 minimum)
Flammability	EN 1021 - 1&2 (cigarette & match), BS 7176 Low Hazard, BS 5852 Ignition Source 5 BS 7176 Medium Hazard, BS 5852 Ignition Source 7 (with interliner), UNI 9175 Classe 1 IM The Furniture and Furnishing (Fire) (Safety) Regulations 1988 (Domestic Cigarette and Match) IMO FTP Code (Part 8)
Flexes	ISO 7854 Method B 400,000 Flexing cycles / 5 year guarantee (full details available)
Light Fastness	6 (ISO 105 - B02)
Fastness to Rubbing	Wet: 4, Dry: 4 (ISO 105 - X12)
Bleach cleanable	ISO 105 E03 colour change 4 for dilution factor 1:4 chlorine solution.
Waterproof	Hydrostatic head BS 3424 Part 26 > 1 metre
Urea resistance	BS 3424 Part 19 no significant deterioration after 24 hrs
Anti-microbial	AATCC 147
Guarantee	5 Years

Cleaning

Vacuum regularly. Wipe with a damp cloth using soap and water or use proprietary upholstery shampoo.  
For deeper cleaning use bleach or alcohol.

# Aspect

A subtle mélange, textured fabric with a warm soft handle, balancing superior flammability performance and a natural aesthetic.

CLASS B

## CAMIRA - ASPECT



SAHARA  
ACT13



YOSEMITE  
ACT14



ATACAMA  
ACT01



AMALFI  
ACT02



METEORA  
ACT08



GORKHA  
ACT12



ZION  
ACT09



MARRAKECH  
ACT03



PETRA  
ACT07



HALONG  
ACT05



CAPPADOCIA  
ACT04



CALABRIA  
ACT06



MATTERHORN  
ACT19



MOLOKAI  
ACT26



EVEREST  
ACT27



RAINER  
ACT24



COMO  
ACT22



LUCERNE  
ACT23



PENYGHENT  
ACT20



JASPER  
ACT21

## CAMIRA - ASPECT



CAPONES  
ACT10



SERENGETI  
ACT16



PATAGONIA  
ACT18



CATBELLS  
ACT17



PALENQUE  
ACT11



BAMBURGH  
ACT15



DOLOMITES  
ACT28



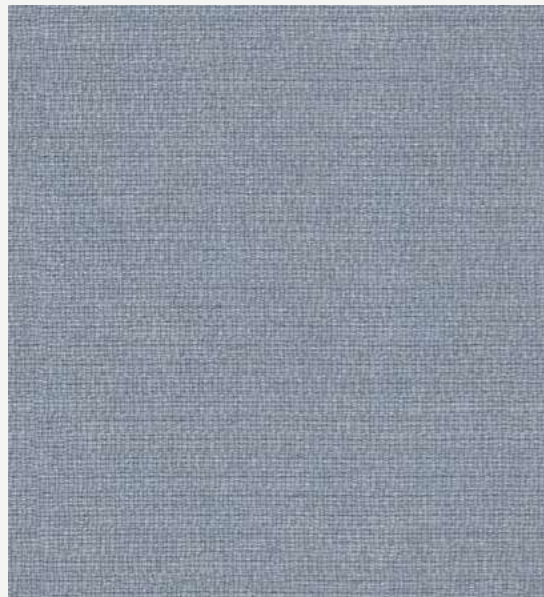
MALHAM  
ACT29



GALAPAGOS  
ACT30



AURORA  
ACT31



OTAGO  
ACT25



## PRODUCT SPECIFICATIONS

Application	Task Seating / Soft Seating
Composition	75% Trevira® CS Flame Retardant Polyester, 25% Polyester. Non metallic dyestuffs.
Environmental	Certified to OEKO-TEX® Standard 100 Certified to Indoor Advantage™ "Gold"
Width	140 cm minimum
Weight	320 g/m2 ±5%
Abrasion Resistance	Heavy duty / 10 year guarantee. Independently certified to ≥50,000 Martindale cycles
Flammability	EN 1021 - 1&2 (cigarette & match), BS 7176 Low Hazard, BS 5852 Ignition source 5 (over CMHR 50kg/m3 foam), BS 7176 Medium Hazard (over CMHR 50kg/m3 foam), DIN 4102 B1, NF D 60-013 (Over 50kg/m3 CMHR foam), ÖNORM B 3825 & A 3800-1 (over CMHR 58kg/m3 foam), UNI 9175 Classe 1 IM
Light Fastness	5 (ISO 105 - B02)
Fastness to Rubbing	Wet: 4, Dry: 4 (ISO 105 - X12)
Bleach cleanable	ISO 105 E03 colour change 4 for dilution factor 1:4 chlorine solution.
Guarantee	10 Years

### Cleaning

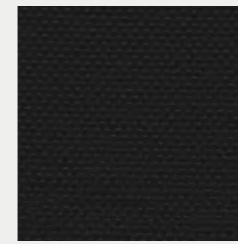
Vacuum regularly. Wipe with a damp cloth using soap and water or use proprietary upholstery shampoo. For deeper cleaning use steam, bleach, alcohol or professionally dry clean. Can be washed at 60°C.

# Quest

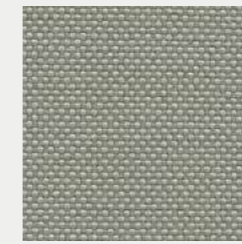
Woven entirely from post-consumer recycled plastic, this lightly textured, multi-application textile brings a touch of the ocean's natural beauty to commercial interiors.

CLASS B

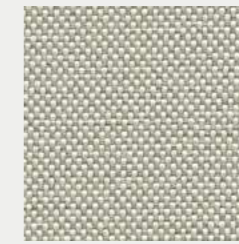
## CAMIRA - QUEST



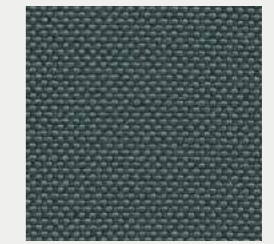
DEPTH  
QUE01



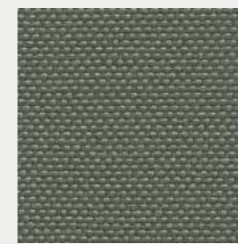
FOSSIL  
QUE02



BARNACLE  
QUE03



MUSSEL  
QUE04



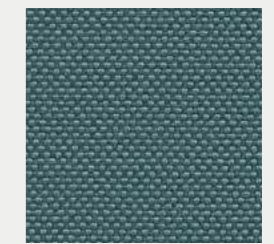
QUARTZ  
QUE05



SHELL  
QUE06



WHELK  
QUE08



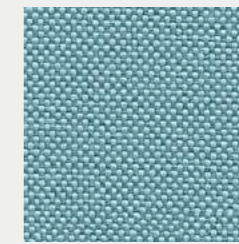
LIMPET  
QUE09



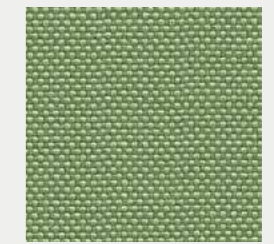
ROCK POOL  
QUE10



WAVE  
QUE11



TIDE  
QUE12



SEA GRASS  
QUE13



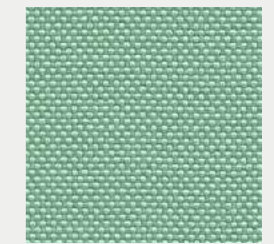
ALGAE  
QUE14



KELP  
QUE15



SEA FOAM  
QUE16



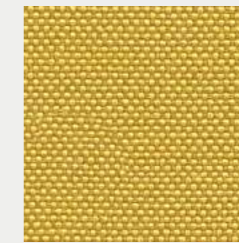
URCHIN  
QUE17



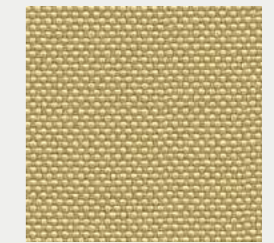
ABALONE  
QUE18



DRIFTWOOD  
QUE19



SANDSTONE  
QUE20



BEACH COMBER  
QUE21

# FABRIC & LEATHER

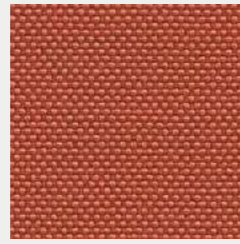
## CAMIRA - QUEST



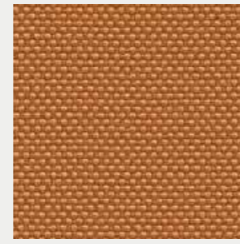
SALT  
QUE22



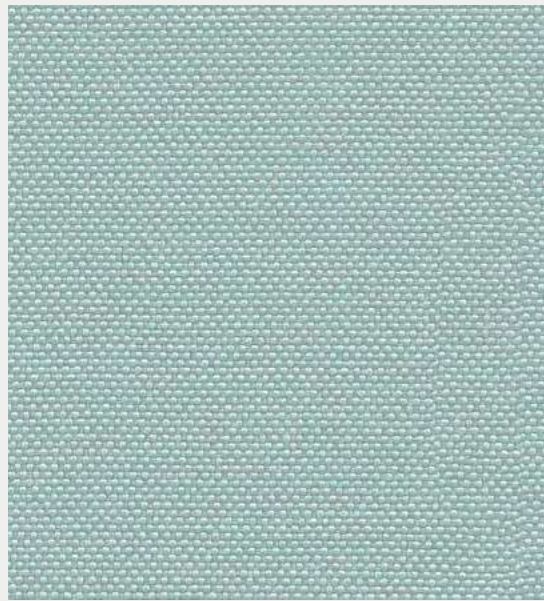
COCKLE  
QUE23



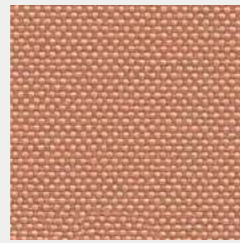
CRAB  
QUE24



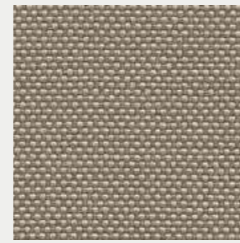
CLAY  
QUE25



RIPPLE  
QUE07



SHRIMP  
QUE26

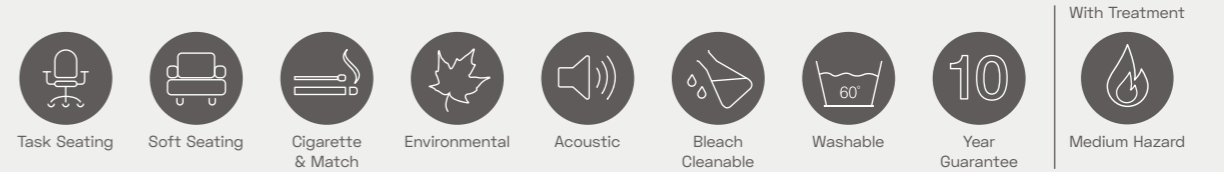


PEBBLE  
QUE27

## CAMIRA - QUEST

### PRODUCT SPECIFICATIONS

Application	Task Seating / Soft Seating / Panel
Composition	100% post-consumer recycled polyester including 75% SEAQUAL® YARN
Environmental	Certified to the EU Ecolabel Certified to OEKO-TEX® Standard 100 Certified to Indoor Advantage™ Gold Made from 100% post-consumer recycled polyester Non metallic dyestuffs
Width	137 cm minimum
Weight	330 g/m2 ±5% (452g/lin.m ±5%)
Abrasion Resistance	Heavy duty / 10 year guarantee. Independently certified to ≥100,000 Martindale cycles
Flammability	EN 1021 - 1 (cigarette) EN 1021 - 2 (match) BS 7176 Low Hazard UNI 9175 Classe 1 IM BS 476 Part 7 Class 1Y (Adhered) EN 13501-1 Adhered Class B, s1, d0 EN 13501-1 Un-adhered Class B, s1, d0 <b>Optional: Please specify when ordering</b> BS 5852 Ignition Source 5 with EnviroFlam5 BS 7176 Medium Hazard with EnviroFlam5 IMO FTP Code (Part 8) with EnviroFlam5 <b>Note:</b> Flammability performance is dependent on components used. Our certificates show what substrates have been used in our tests. For composite tests customers must ensure their complete furniture meets the necessary standards.
Light Fastness	4-6 (ISO 105 - B02)
Fastness to Rubbing	Wet: 4, Dry: 4 (ISO 105 - X12)
Bleach Cleanable	ISO 105 E03 colour change 4 for dilution factor 1:4 chlorine solution
Acoustic	Acoustically transparent. Acoustic graphs available upon request
Cleaning	Vacuum regularly. Wipe with a damp cloth using a proprietary upholstery shampoo/ soap. For deeper cleaning use steam, bleach, alcohol or professionally dry clean. Can be washed at 60°C.
Guarantee	10 Years



# RePlay

Inspired by sportswear, it blends a futuristic knitted look with two-tone micro details, offering flexibility, performance, and sustainable design made from 100% post-consumer recycled polyester.

CLASS B



## CAMIRA - REPLAY



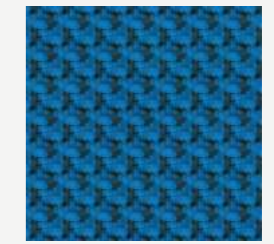
FLEX  
REPO1



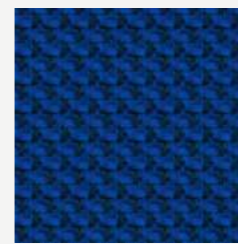
AGILE  
REPO2



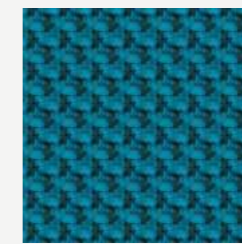
ATHLETIC  
REPO3



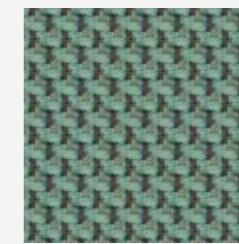
RUN  
REPO4



JOG  
REPO5



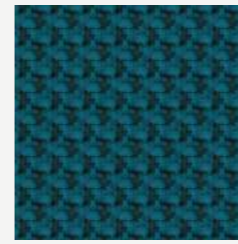
FLIP  
REPO6



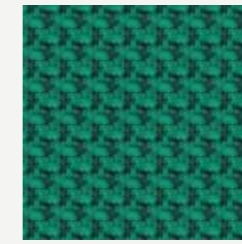
JOY  
REPO7



CHEER  
REPO8



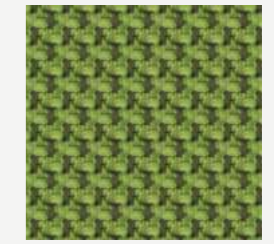
HANDSTAND  
REPO9



STEP  
REPO10



FREESTYLE  
REPO11



MOTION  
REPO12



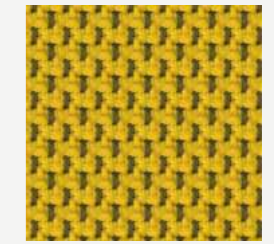
SKIP  
REPO13



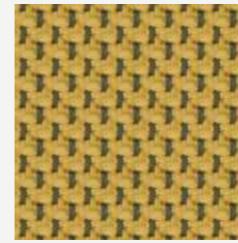
HOP  
REPO14



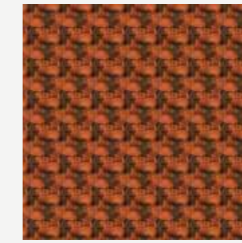
PULL  
REPO15



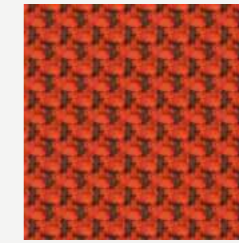
PUSH  
REPO16



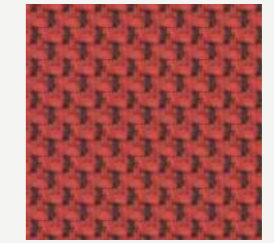
LIFT  
REPO17



ROLL  
REPO18

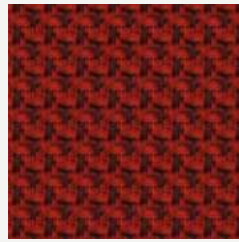


FUN  
REPO19

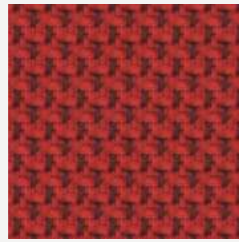


PLAY  
REPO20

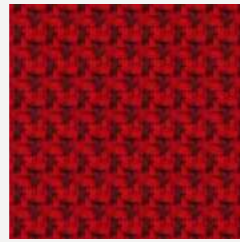
## CAMIRA - REPLAY



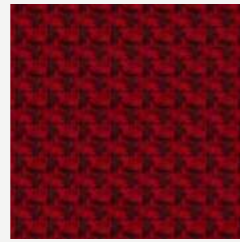
MOVE  
REP21



GAME  
REP22



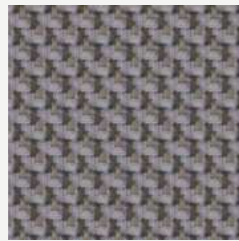
ACTIVE  
REP23



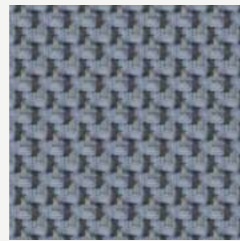
WORKOUT  
REP24



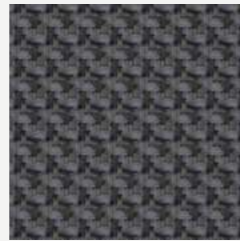
JUMP  
REP25



BOUNCE  
REP26



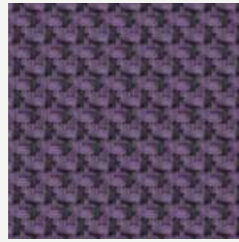
CATAPULT  
REP28



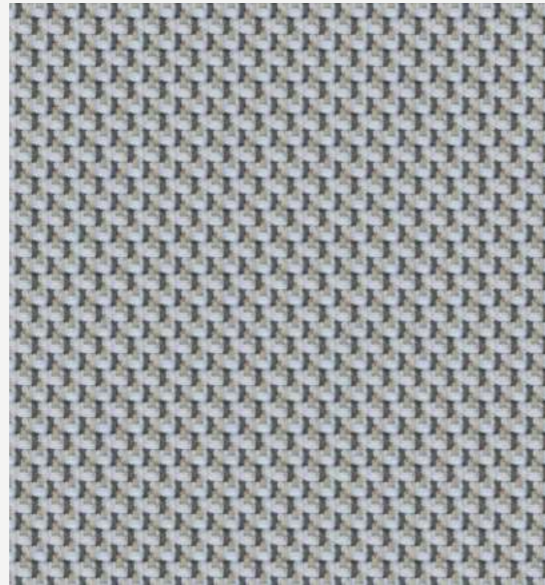
TWIRL  
REP29



DANCE  
REP30



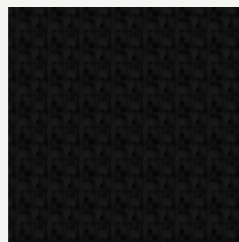
THROW  
REP31



SPORT  
REP27



SWING  
REP32



CLIMB  
REP33

## CAMIRA - REPLAY

### PRODUCT SPECIFICATIONS

Composition	100% Post-Consumer Recycled Flame Retardant Polyester
Width	140 cm minimum
Weight	380 g/m <sup>2</sup> ±5% (532 g/lin.m ±5%)
Abrasion Resistance	Heavy duty / 10 year guarantee Independently certified to ≥100,000 Martindale cycles
Flammability	EN 1021 - 1 (cigarette), EN 1021 - 2 (match), BS 7176 Low Hazard, BS 5852 Ignition Source 5, BS 7176 Medium Hazard, DIN 4102 B1, NF D 60-013, ÖNORM B 3825 & A 3800-1, (over CMHR 58kg/m <sup>3</sup> Foam), UNI 9175 Classe 1 IM, EN 13501-1 Adhered Class B, s1, d0, EN 13501-1 Un-adhered Class B, s1, d0, NF P 92-507 M1.
Light Fastness	4-6 (ISO 105 - B02)
Fastness to Rubbing	Wet: 4, Dry: 4 (ISO 105 - X12)
Bleach Cleanable	ISO 105 E03 colour change 4 for dilution factor 1:4 chlorine solution.
Acoustic Properties	Acoustically transparent. Acoustic graphs available upon request
Guarantee	10 Years

#### Cleaning

Vacuum regularly. Wipe with a damp cloth using a proprietary upholstery shampoo/ soap. For deeper cleaning use steam, bleach, alcohol or professionally dry clean. Can be washed at 60°C. Full details can be found in our cleaning and disinfection guide.

Task seating

Soft seating

Panels

Cigarette & Match

Medium Hazard  
M1 / B1

Environmental

Acoustic

Bleach  
cleanable

Washable

10  
Year guarantee

Curtains

With Treatment

www.oeko-tex.com

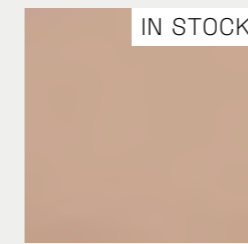
# Valencia

ARTIFICIAL LEATHER

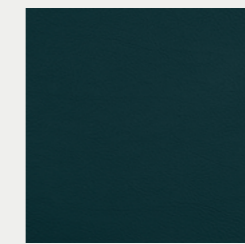
An unique and attractive aesthetic with the combination of high-quality artificial leather and vibrant colors.

CLASS B

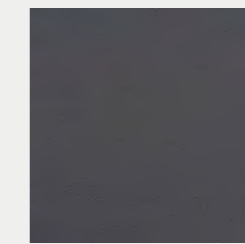
## SPRADLING - VALENCIA



LOTUS  
107-2113



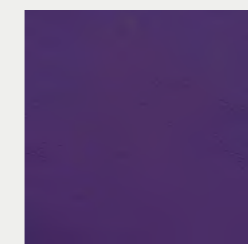
TEAL  
107-2119



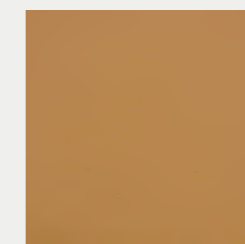
PETROL  
107-5065



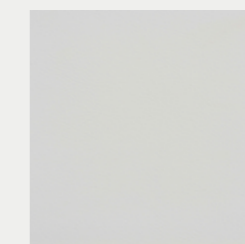
WARM GREY  
107-4044



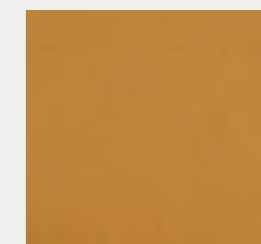
ULTRA VIOLET  
107-2118



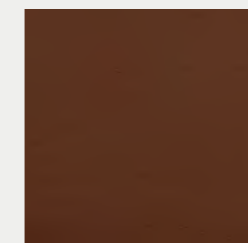
CASHMERE  
107-2117



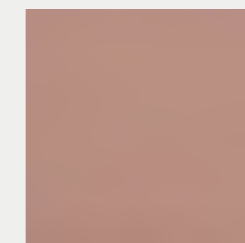
PURE WHITE  
107-9607



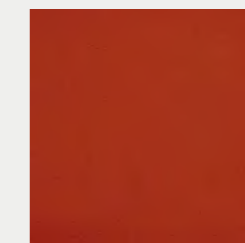
CAMEL  
107-2116



CHESTNUT  
107-2115



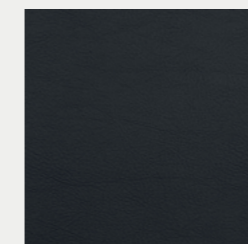
ROSÉ  
107-2114



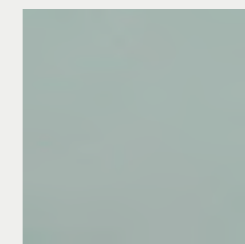
TOMATO  
107-2112



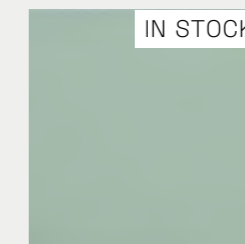
SQUASH  
107-2111



NIGHT  
107-2108



SKYLIGHT  
107-2107



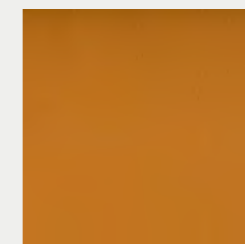
CORAL  
107-2106



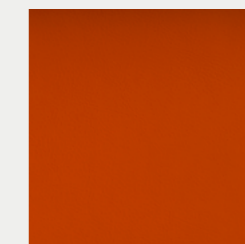
SONNE  
107-2020



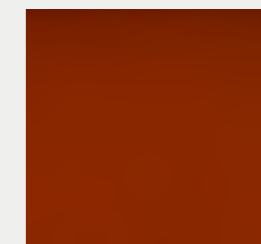
SAFRAN  
107-6012



MELONE  
107-6013



ORANGE  
107-6019



NECTARINE  
107-6003

# FABRIC & LEATHER

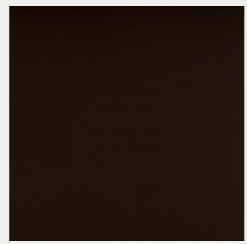
## SPRADLING - VALENCIA



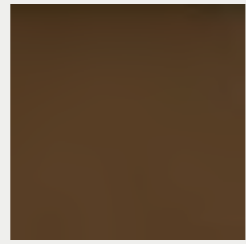
TERRACOTTA  
107-0035



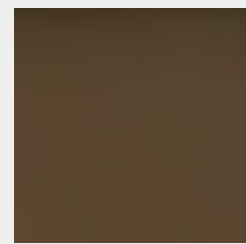
BUCHE  
107-0033



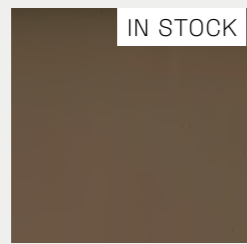
PRALINÉ  
107-0001



SUMATRA  
107-9001



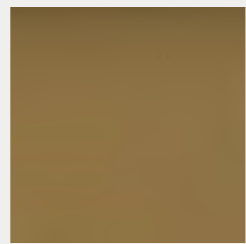
MUSHROOM  
107-4001



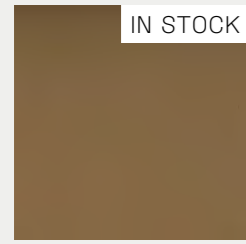
TAUPE  
107-0034



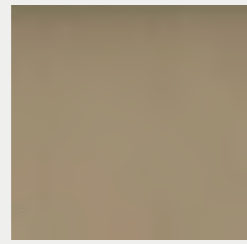
COGNAC  
107-0002



CHAMPAGNE  
107-1001



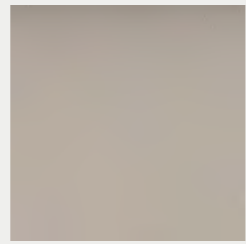
BEIGE  
107-1050



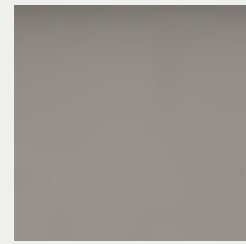
LEINEN  
107-1049



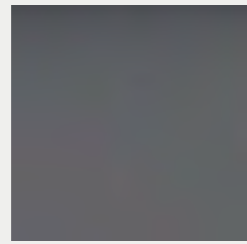
SISAL  
107-1048



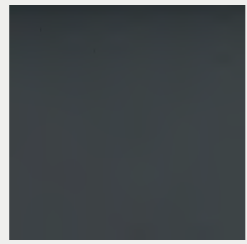
WEISS  
107-8032



AUSTER  
107-4040



PERLE  
107-4045



PLATIN  
107-4043



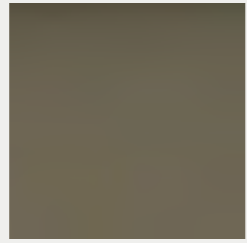
LICHTGRAU  
107-4052



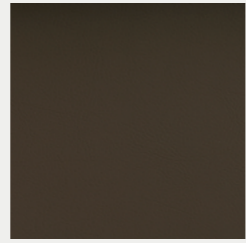
GRAPHITE  
107-4003



SCHWARZ  
107-9035

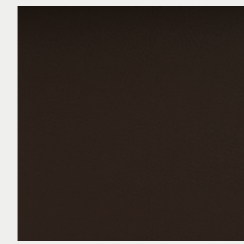


LAUREL  
107-4002

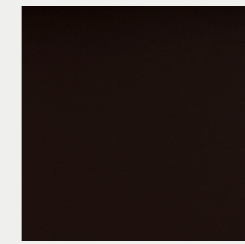


MOSS  
107-5002

## SPRADLING - VALENCIA



METEOR  
107-4041



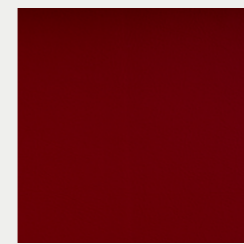
MOCCA  
107-0020



MERLOT  
107-2001



PORT  
107-2062



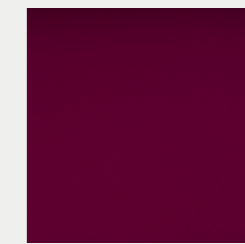
KIRSCH  
107-2074



ROT  
107-2075



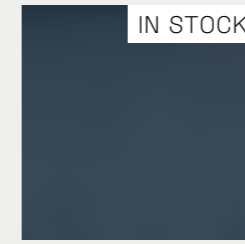
PINK  
107-2021



BERRY  
107-2002



AMETHYST  
107-7001



TITAN  
107-4042



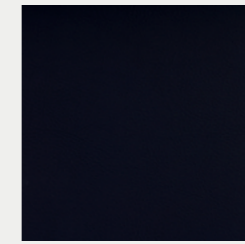
LAVENDEL  
107-3001



BALTIC  
107-3069



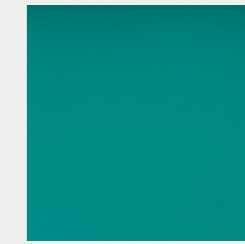
DELFT  
107-3067



MARINE  
107-3068



TÜRKIS  
107-5057



JADE  
107-5056



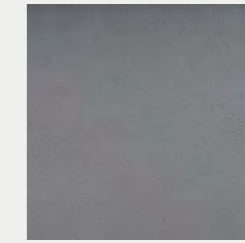
APFEL  
107-5041



OLIVE  
107-5001



GRÜN  
107-5069



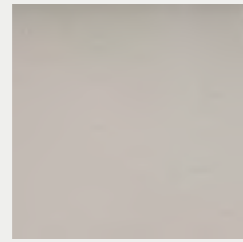
SILVER  
107-4020

# FABRIC & LEATHER

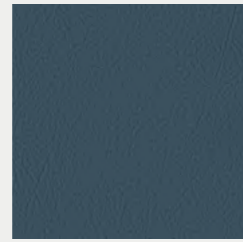
## SPRADLING - VALENCIA



IVORY  
107-1020



PEARLESSENCE  
107-8020



AZURE  
107-0370



CACTUS  
107-8438



CLOUD  
107-5032



EUCALYPTUS  
107-6438



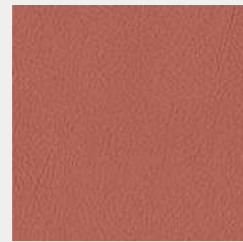
EVEREST  
107-2008



FUNGI  
107-2522



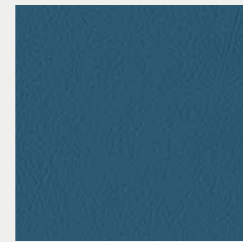
MISTY  
107-8415



PEACH  
107-9245



PINE  
107-5451



SCUBA  
107-0337



AVOCADO  
107-2110

Colors may slightly vary due to photographic lighting sources or your monitor settings.

## SPRADLING - VALENCIA

### PRODUCT SPECIFICATIONS

Composition:	Topcoat :Vinyl   Backing; 100% Polyester Hi-Loft2™
Weight:	650 gr/m2
Width:	min. 137 cm
Roll size:	+/- 30m
Abrasion:	>300.000 cycles (MARTINDALE)
Flame retardancy*:	EN 1021 Part 1 & 2   DIN 4102 B2   MED   ECE R 1 18.02 Anx. 6,7 & 8 IMO 2010 FTP Part 8   UNI 9175 Classe I.IM   UNE 23.727-90 IR/M.2 NF P 92-503 / M2   EN 71-2:2006+ A1:2007   FMVSS 302
Cold Crack:	-23°C
UV-Resistance:	1000 hours: ≥ 6 Blue wool scale
*This term and any corresponding data refer to the typical performance in the specific tests indicated and should not be construed to imply the behavior of this or any other material under actual fire conditions.	
<b>FINISHES AND TREATMENTS PERMABLOK3®</b>	
Virucidal Activity	Except Valencia Pure White 107-9607 that has PERMABLOK3® Plus  ISO 18184:2019: Coated Fabrics treated with PERMABLOK3® are proven to reduce the presence of Coronavirus** by more than 90% within one hour of contact.  ISO 21702:2019: All the Coated fabrics treated with PERMABLOK3® are capable of reducing the Coronavirus** activity by 99,9% within 24 hours of exposure on the surface. ISO 22196:2011. Value of antibacterial*** activity R>2.
Bacteriostatic Properties:	** Testing was conducted with material exposed to Feline Coronavirus (same coronavirusidae family, structures and mechanisms similar to SARS-Cov2)  *** Testing was conducted with material exposed to Staphylococcus aureus, Staphylococcus aureus (MRSA), Escherichia coli and Klebsiella pneumoniae.
WARRANTY	5 Years. Terms and conditions apply, Warranty conditions are displayed on our website.
CARE AND CLEANING	<ul style="list-style-type: none"> <li>The vinyl should be cleaned periodically in order to maintain its appearance and prevent build-up of dirt and contaminants.</li> <li>Any stain, spills, or soiling should be cleaned up promptly to prevent the possibility of permanent staining.</li> <li>Vinyl fabrics treated with PERMABLOK3® require a minimum of maintenance to retain their good looks. Use soft soapy solutions or special cleaning products for vinyl fabrics to remove stains on the surface of the material. Remove only with a damp white cloth.</li> <li>Lacquers, strong cleaners, detergents, xylene-based solutions, acetone, or MEK cause immediate damage and contribute to the deterioration of the material. The use of such cleaners is at the owner's risk.</li> </ul>

Certain clothing and accessory dyes (such as those used on denim jeans) may migrate to lighter colors. This phenomenon is increased by humidity and temperature and is irreversible. SPRADLING International GmbH, SPRADLING UK Ltd, and EURO SPRADLING S.L.U will not assume responsibility for dye transfer caused by external contaminants and possible permanent staining caused by this phenomenon.

PERMABLOK3® is a registered trademark of Spradling Holdings, Inc.® | Hi-Loft2™ and VALENCIA™ are trademarks of Spradling Holdings, Inc.®

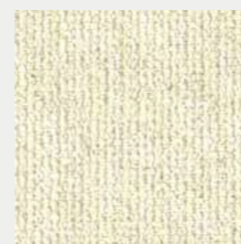
Colors may slightly vary due to photographic lighting sources or your monitor settings.

# Loop

A modern touch on traditional design elements. First sight impression, combined with a colourful yarn blend when looking more closely.

CLASS B

LOOP



02



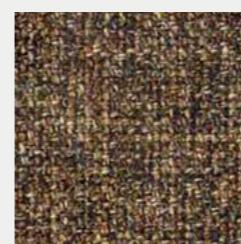
04



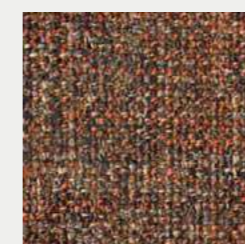
19



23



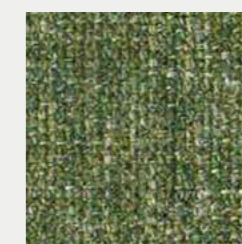
24



28



29



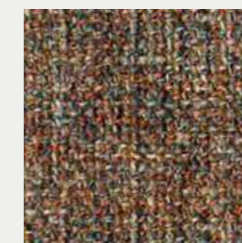
31



30



21



27



40



41



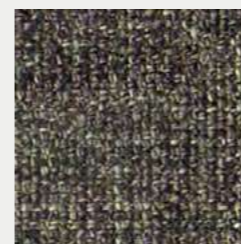
44



08



18



48

411

Colors may slightly vary due to photographic lighting sources or your monitor settings.

## LOOP



39

## LOOP

### PRODUCT SPECIFICATIONS

Technical Informations	Unit	Value	Test Method
Weight	gr/m <sup>2</sup>	509 (± %5)	BS EN ISO 12127:1998
Thickness	mm	1,4	
Width	cm	140 (± %5)	
Roll Meter	mt	50 (± %5)	
Resistance to Abrasion		40.000	EN ISO 12947-2
Seam Slippage	mm	Weft 3-4 / Warp 3-4	ISO 13936-2
Pilling	2000 cycle	5	ISO 12945-2
Colour Fastness to Light		5	TS EN ISO 105-B2
Composition		%28 ACR %56 COT %4 LIN %12 PES	



#### Product Characteristics

- Only valid for Loop colour codes.
- It can be cleaned with neutral cleaning materials. Chemical solvents should not be used.
- The detergent must not include oxide bleach and bleach.
- There may be colour and tone differences between different lots, arising from the nature of the production and within conventionally accepted limits.
- The product should not be exposed to direct sunlight.
- The cutting should be done after the approval of the colour, tone and defect controls by the related parties. In this context, taking into account that, although exceptional, there may be tonal differences of products that arrive in pieces, they should be checked with the delivery of the product before cutting. Making upholstery without above mentioned examination may cause not getting the desired result.
- While cutting or upholstery, the products should never be left folded, nor should they be left under-weight that may cause forming lines on them.
- The tape should never be used on the product surface. This matter, which our company pays attention to, should not be overlooked after the product has been checked or if it is wrapped for a second time during use. When the leftover product should be rolled, please pay attention not to fold it tightly.
- All kinds of leather and velvet should not come into direct contact with the sponge. Sponge should be covered with interlining or cotton lining.
- Stains, such as oil, chocolate, chewed gum should never be cleaned with liquid (water, thinner, acetone and other solvents).
- Dry cleaning methods are also recommended for such stains.
- Vacuum cleaner can be used on daily and weekly basis.
- Please get a confirmation about stocks.
- The using place and purpose of the product should be conventionally accepted places and purposes.
- No liability can be accepted for products that are not used properly.
- The information stated above is of reliable common values. Please ask for special values of the contract.

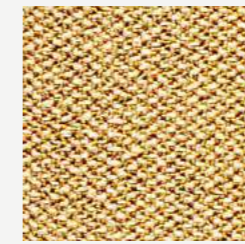
# Era

A subtle, two tone polyester fabric containing stretch in both directions for ease of upholstery.

## CAMIRA - ERA



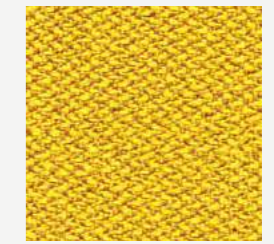
TRANSITION  
CSE30



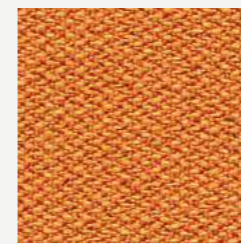
SPLITSECOND  
CSE31



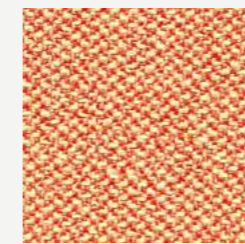
LIFETIME  
CSE03



OCCASION  
CSE32



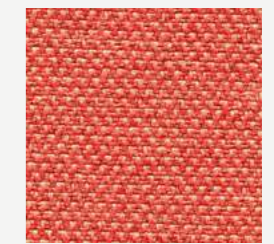
MEASURE  
CSE27



SEQUENCE  
CSE25



SPAN  
CSE05



TURN  
CSE26



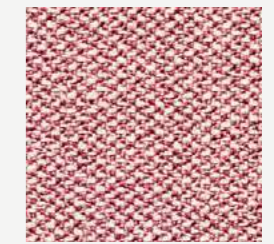
EXPERIENCE  
CSE29



EXTENT  
CSE28



CALENDAR  
CSE19



DATE  
CSE24



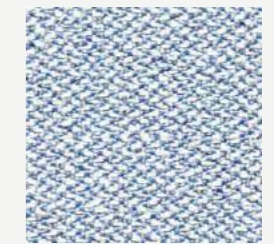
CYCLE  
CSE06



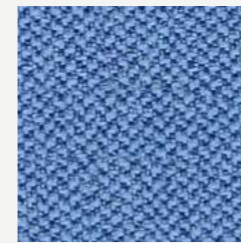
PHASE  
CSE17



PRIME  
CSE09



ALLOWANCE  
CSE38



CHAPTER  
CSE08



PERENNIAL  
CSE12



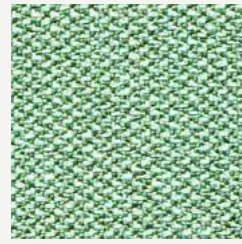
RANGE  
CSE42



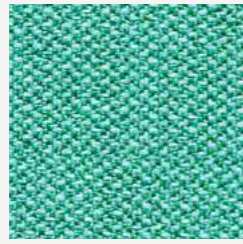
MATURITY  
CSE40

CLASS A

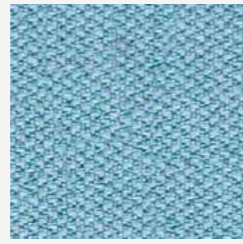
## CAMIRA - ERA



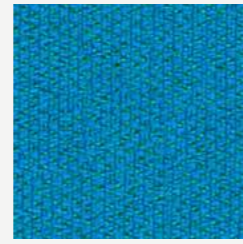
NOTATION  
CSE36



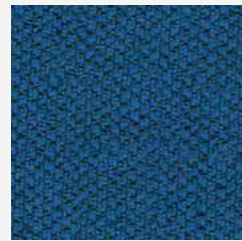
REST  
CSE37



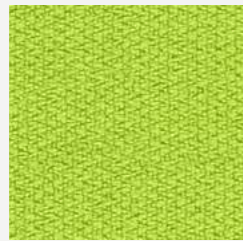
AEON  
CSE20



EVERLASTING  
CSE10



STAGE  
CSE15



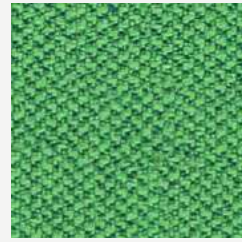
PERIOD  
CSE07



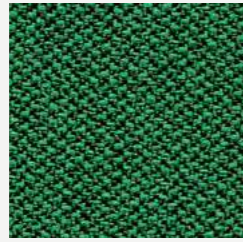
ENDURANCE  
CSE34



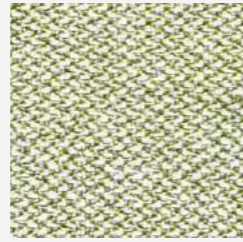
TIMELAPSE  
CSE16



EVENT  
CSE18



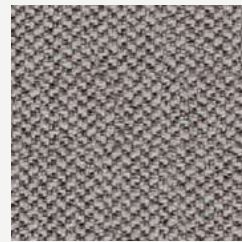
SIGNATURE  
CSE35



ANALOGUE  
CSE33



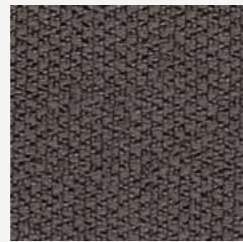
PROMPT  
CSE45



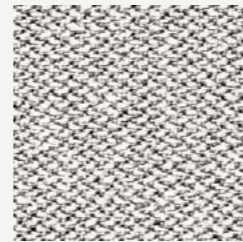
GENERATION  
CSE02



OCCURENCE  
CSE23



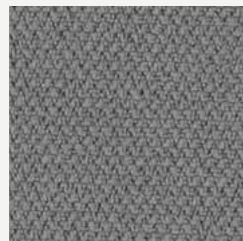
HISTORY  
CSE21



MEMO  
CSE46



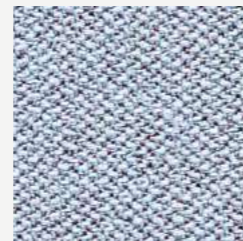
QUOTA  
CSE41



FORECAST  
CSE11

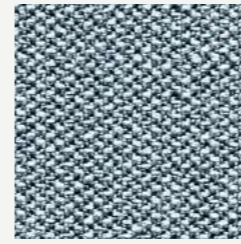


PRESENT  
CSE13

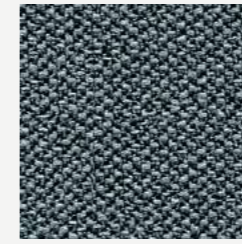


YOUTH  
CSE39

## CAMIRA - ERA



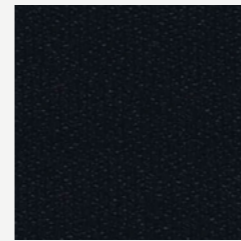
LATE  
CSE43



ELAPSE  
CSE44



FUTURIST  
CSE01



FORWARD  
CSE14

### PRODUCT SPECIFICATIONS

Application	Task Seating / Soft Seating
Composition	100% Polyester
Environmental	Certified to OEKO-TEX® Standard 100 Certified to Indoor Advantage™ "Gold" Non metallic dyestuffs
Width	140 cm minimum
Weight	320 g/m2 ±5%
Abrasion Resistance	Heavy duty / 10 year guarantee. Independently certified to ≥100,000 Martindale cycles
Flammability	EN 1021 - 1&2 (cigarette & match), BS 7176 Low Hazard EN 13501-1 Adhered Class B, s1, d0, EN 13501-1 Un-adhered Class C, s1, d0 BS 7176 Medium Hazard with EnviroFlam5
Light Fastness	5 (ISO 105 - B02)
Fastness to Rubbing	Wet: 4, Dry: 4 (ISO 105 - X12)
Bleach cleanable	ISO 105 E03 colour change 4 for dilution factor 1:4 chlorine solution.
Guarantee	10 Years

**Cleaning**  
Vacuum regularly. Wipe with a damp cloth using soap and water or use proprietary upholstery shampoo.  
For deeper cleaning use steam, bleach, alcohol or professionally dry clean. Can be washed at 60°C.

# Xtreme

A modern crepe weave fabric made from 100% post-consumer recycled polyester.

CLASS A



## CAMIRA - XTREME



ADOBO  
YS165



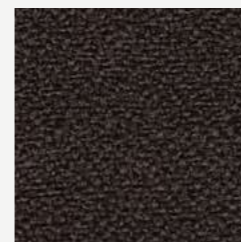
ARUBA  
YS108



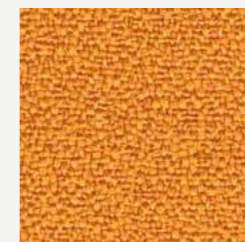
SANDSTORM  
YS071



NOUGAT  
YS091



SOMBREIRO  
YS046



SOLANO  
YS072



TORTUGA  
YS168



LOBSTER  
YS076



BELIZE  
YS105



PANAMA  
YS079



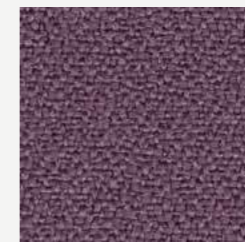
DIABLO  
YS101



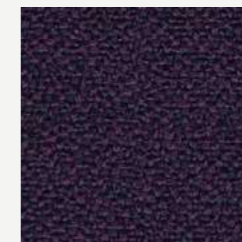
TOKARA  
YS136



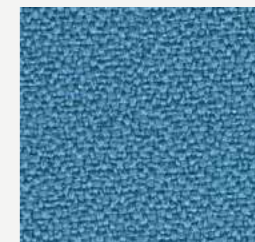
TOBAGO  
YS030



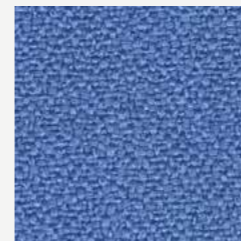
BRIDGETOWN  
YS102



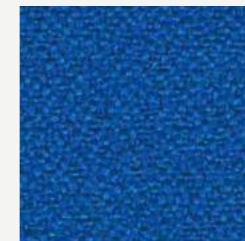
TAROT  
YS084



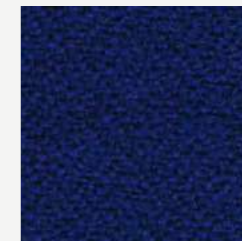
PARASOL  
YS073



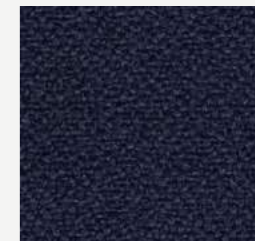
BLUEBELL  
YS097



HONEYMOON  
YS035

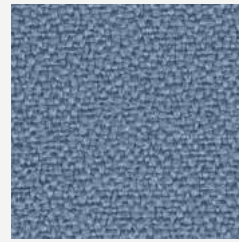


OCEAN  
YS100

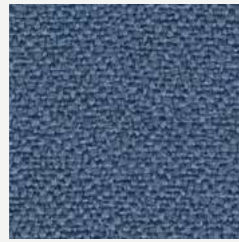


CAYMAN  
YS024

## CAMIRA - XTREME



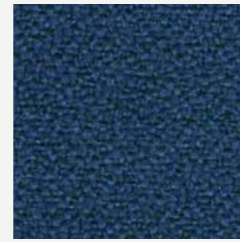
STEEL  
YS095



MARTINIQUE  
YS004



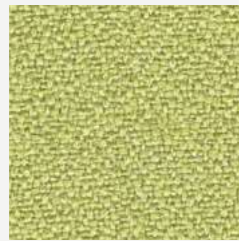
SCUBA  
YS082



CURACAO  
YS005



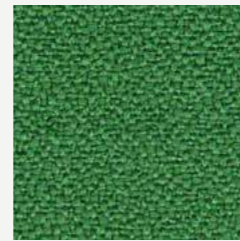
COSTA  
YS026



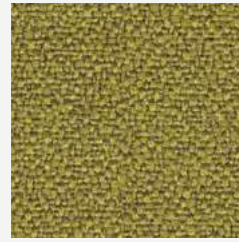
APPLE  
YS096



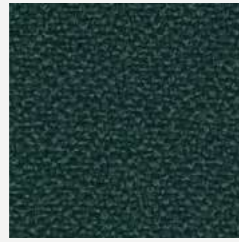
MADURA  
YS156



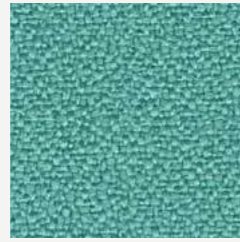
LOMBOK  
YS159



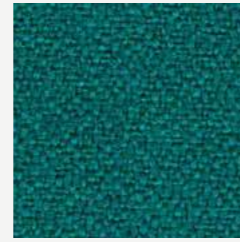
APPLEDORE  
YS077



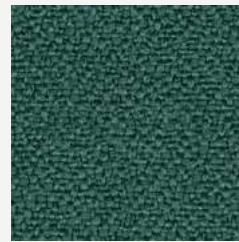
TABOO  
YS045



CAMPECHE  
YS074



TONGA  
YS160



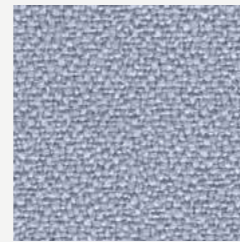
WINDJAMMER  
YS047



KRABI  
YS141



BLIZZARD  
YS081



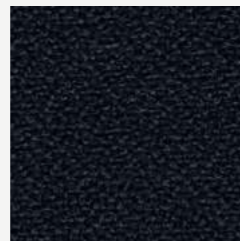
RUM  
YS173



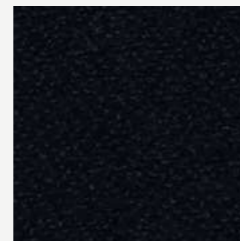
OSUMI  
YS171



BONAIRE  
YS172

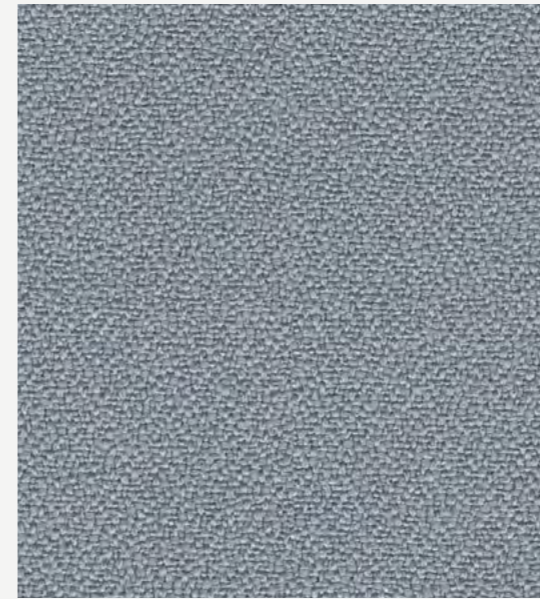


PADANG  
YS145



HAVANA  
YS009

## CAMIRA - XTREME



SLIP  
YS094

### PRODUCT SPECIFICATIONS

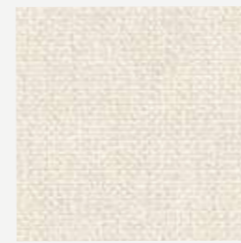
Application	Task Seating
Composition	100% post-consumer recycled polyester
Environmental	Certified to the EU Ecolabel, Certified to OEKO-TEX® Standard 100, Certified to Indoor Advantage™ "Gold" Made from 100% recycled polyester Non metallic dyestuffs
Width	140 cm minimum
Weight	310 g/m <sup>2</sup> ±5%
Abrasion Resistance	Heavy duty / 10 year guarantee. Independently certified to ≥100,000 Martindale cycle
Flammability	EN 1021 - 1&2 (cigarette & match), BS 7176 Low Hazard, BS 5852 Ignition Source 5, BS 7176 Medium Hazard, DIN 4102 B1, NF D 60-013 ,ÖNORM B 3825 & A 3800-1 (over 58 kg/m <sup>3</sup> CMHR foam), UNI 9175 Classe 1 IM, BS 476 Part 7 Class 1
Light Fastness	6 (ISO 105 - B02)
Fastness to Rubbing	Wet: 4, Dry: 4 (ISO 105 - X12)
Bleach cleanable	ISO 105 E03 colour change 4 for dilution factor 1:4 chlorine solution.
Guarantee	10 Years

**Cleaning**  
Vacuum regularly. Wipe with a damp cloth using soap and water or use proprietary upholstery shampoo. For deeper cleaning use steam, bleach, alcohol or professionally dry clean. Can be washed at 60°C.

# Athena

A mix of polyester and cotton, suitable for upholstery with prestigious colours and soft touch.

## ATHENA



1152



1153



1155



1162



1173



1228



1144



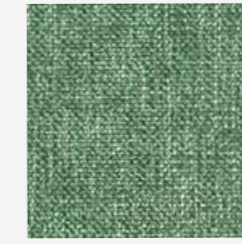
1229



1192



1206



1199



1187



1132



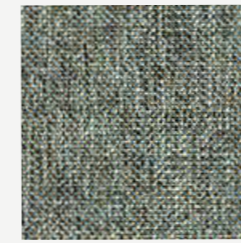
1224



1179



1500



1188



1190



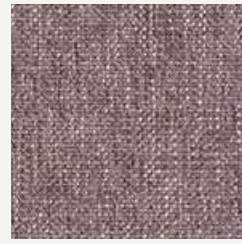
1225



1156

CLASS A

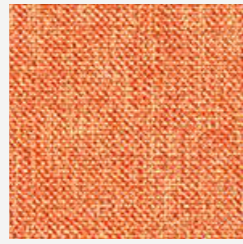
## ATHENA



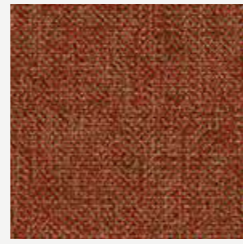
1233



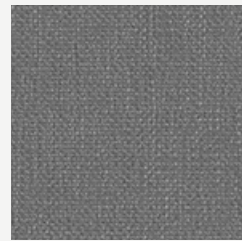
1226



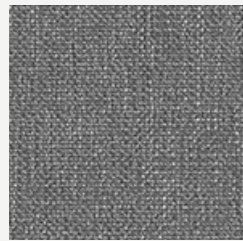
1203



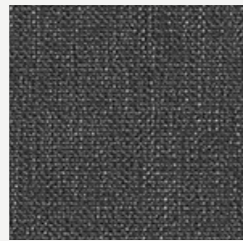
1204



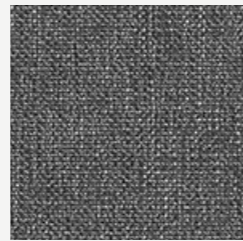
1170



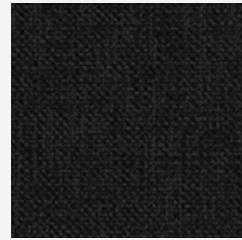
1171



1141



1175



1140



1198

Colors may slightly vary due to photographic lighting sources or your monitor settings.

## ATHENA

### PRODUCT SPECIFICATIONS

Technical Informations	Unit	Value	Test Method
Composition	60% polyester, 40% cotton		
Weight	gr/m <sup>2</sup>	440 ±20	ISO 2286-2
Width	cm	140 ±2	
Resistance to Abrasion	cycles	>40.000	ISO 12947-1
Colour Fastness to Light	bw	4/5	ISO 105-B02
Colour Fastness to Rubbing	wet dry	>5 >5	ISO 105-X12
Roll Length	m	50 ±10	

#### Liquid Stains

Blot the liquid stain gently with a high-absorbent material. Pat dry the area gently with a dry material to remove the remaining humidity (cotton cloth, paper towel, etc...). If the stain from the spill remains, remove the stain with a soapy cloth without diffusing the stain. After each rubbing motion, refresh the clean soapy cloth in order to prevent soiling.

#### Solid Particles

Remove the excess soiling with ultimate care without diffusing. Remove the solid particle from the fabric surface with the help of a soft spatula. To remove dust, use a vacuum cleaner or a soft brush. The remaining stains should be removed by rubbing with a soapy cloth in circular motion.

#### Ball-Point Pen and Similar Difficult Stains

Dampen a clean cotton cloth in a white soap solution. Rub the stain off gently. Clean the surface with the damp cloth and leave the fabric for drying.

#### Alcohol Derives

Petroleum and alkali based solvents should not be used for cleaning. After all cleaning processes, the drying should be done with a low temperature blow dryer in large circular motion or the fabric should be left for natural drying. After drying, misoriented and damaged piles should be fixed with a soft brush.

Valid for all colors. Red colors may have less color fastness to rubbing.

Colors may slightly vary due to photographic lighting sources or your monitor settings.

# Canyon

ARTIFICIAL LEATHER

High abrasion resistant  
and flame retardant  
high-quality easy to  
clean artificial leather  
with a genuine leather  
look.

CLASS A



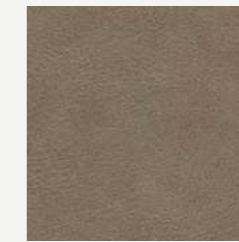
## CANYON



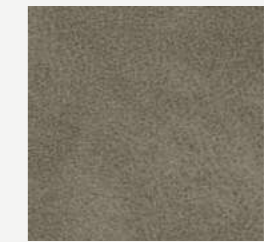
21745



22658



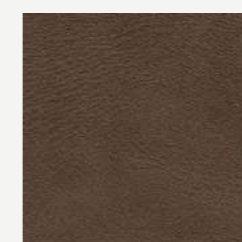
22661



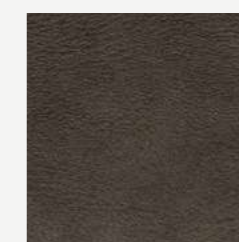
21747



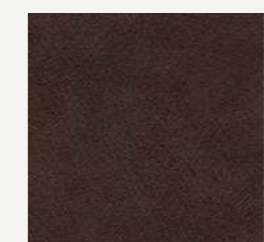
22662



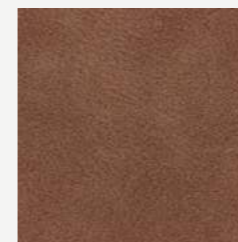
22663



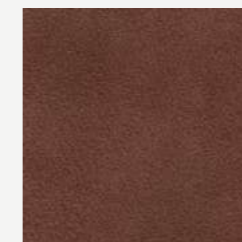
21748



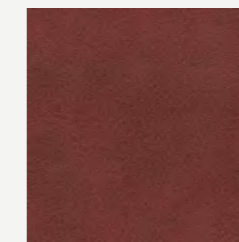
21753



21749



21750



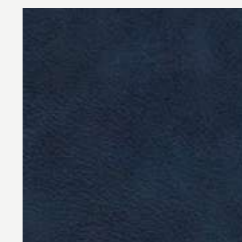
21751



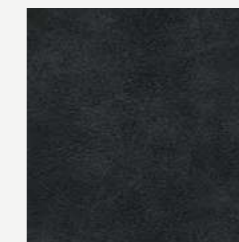
21754



21755



21757



21758

CANYON



21728

CANYON

PRODUCT SPECIFICATIONS

Technical Informations	Unit	Value	Test Method
Composition	80% pvc, 18% polyester, %2 pu		
Weight	gr/m <sup>2</sup>	700 ±5%	TS 6450
Thickness	mm	1,35 ±5%	ISO 2589
Width	cm	140 ±2	TS 4119
Roll Length	m	30	
Resistance to Abrasion	martindale	>100.000	BS EN ISO 12947-2:2016
Tensile Strength (Lenght)	n	485	ISO 1421
Tensile Strength (Across)	n	290	ISO 1421
Elongation Strenght		Length 68 g Across 240 g	ISO 1421
Colour Fastness to Light		+5	DIN EN ISO 105-B02:1994
Flammability		Pass	BS 5852-1:1979 EN 1021 1-2

Product Characteristics

- Only valid for Canyon colour codes.
- The cleaning process should start around the stain and held without dispersing the stain. It should be cleaned by gently wiping.
- You can wipe off ballpoint pen stains with 20% ethanol. For other stains such as coffee, tea, milk, cosmetics, jam, syrup, fruit juice 40c lukewarm water, neutral cleaning agents and sponge can be used.
- In oil and grease stains, the stain can be wiped of with the help of a brush after the chalk powder is used for covering the stain.
- The shoe polish stain can be removed with perchloroethylene or 10% diluted ammonia.
- All kinds of real and artificial leather should not be cleaned with bleach, detergent, coloured soap and similar materials and the product should not be exposed to direct sunlight. It should be kept away from sources of strong light (spot, etc.) and heat.
- There may be colour and tone differences between different lots, arising from the nature of the production and within conventionally accepted limits.
- All kinds of leather and velvet should not come into direct contact with the sponge. Sponge should be covered with interlining or cotton lining.
- Please get a confirmation about stocks.

# New King

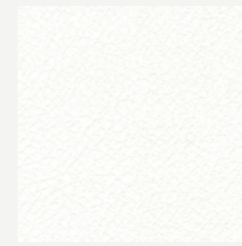
ARTIFICIAL LEATHER

Easy to clean artificial leather made of a special PVC and polyurethane mix with the support of polyester base lining.

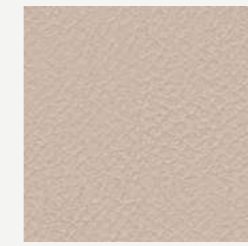
CLASS A



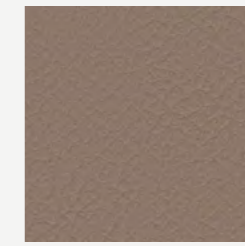
## NEW KING



6



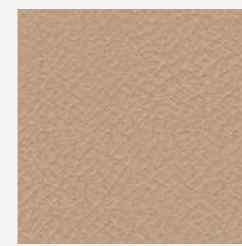
13742



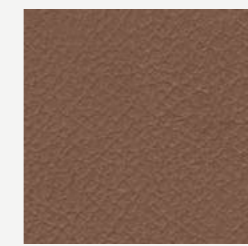
13743



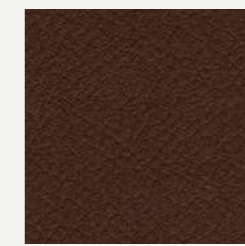
13719



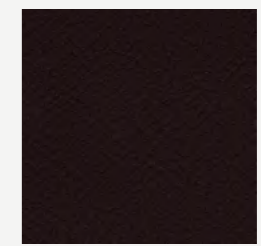
62501



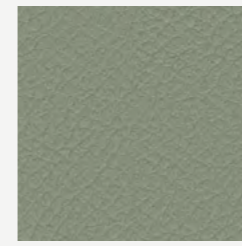
13723



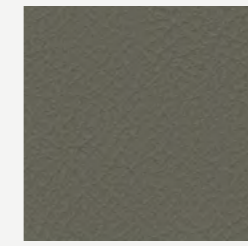
13724



13725



62503



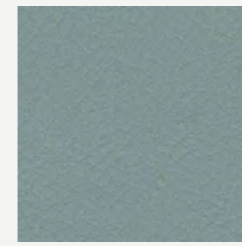
62504



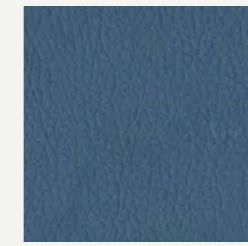
17563



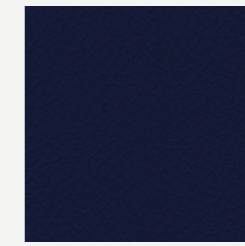
62502



62505



13824



17566



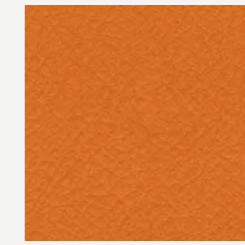
13823



17567



24327



13592



62509

## NEW KING



13721



38620



24329



13822



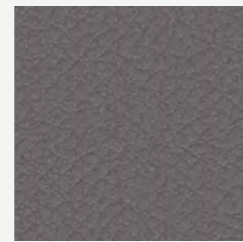
38621



24328



38619



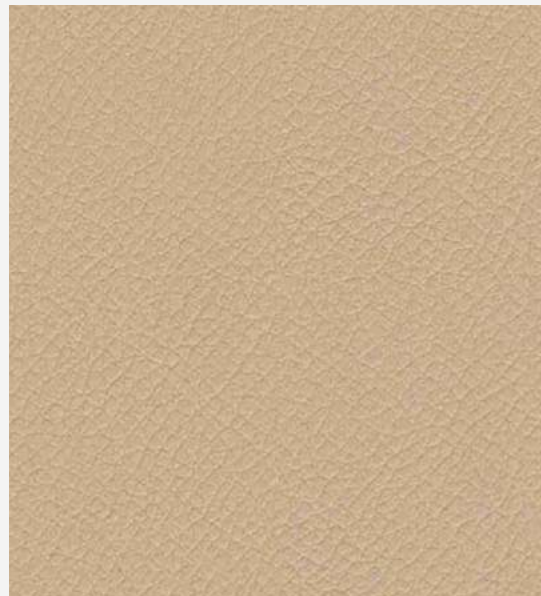
17560



17568



13727



13591

## NEW KING

### PRODUCT SPECIFICATIONS

Technical Informations	Unit	Value	Test Method
Composition		76% pvc, 22% polyester, 2% pu	
Weight	gr/m <sup>2</sup>	580 ±5%	
Width	cm	140	
Roll Length	m	30	
Resistance to Abrasion	mantindale	230.000	BS EN ISO 12947-2:1999&4:1999
Bursting Strength		> 600 kPa	BS EN ISO 5470-1:1999
Elongation Strength	warp weft	260 120	BS EN ISO 4674-1:1999
Resistance to Seam Slippage	warp weft	250 n 250 n	BS 3320:1998
Flammability		pass	BS 5852-1:1979 EN 1021 1-2
Light Fastness		5	DIN EN ISO 105-B02:2002

#### Product Characteristics

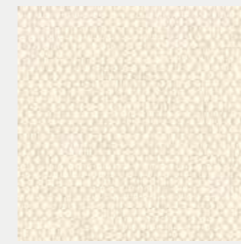
- Only valid for New King colour codes.
- Our Atlantis product line has flame retardancy feature.
- The cleaning process should start around the stain and held without dispersing the stain. It should be cleaned by gently wiping.
- All kinds of real and artificial leather should not be cleaned with bleach, detergent, coloured soap and similar materials and the product should not be exposed to direct sunlight.
- The product should be kept away from sources of strong light (spot, etc.) and heat.
- The using place and purpose of the product should be conventionally accepted places and purposes. No liability can be accepted for products that are not used properly.
- Leather products should not be kept in plastic packaging and humid places for a long time. Solid objects such as toys and jewellery may cause unintended starches on the material.
- Leather-covered products should be placed at least 50 cm away from heat sources (stoves, radiators, fireplaces, etc.). Otherwise, the leather may lose moisture which may cause undesired cracks.
- Impacts, scratches, etc. that may occur due to transportation and external, should be considered out of warranty.
- Direct contact of pets with leather goods should be prevented.
- Direct contact of the products with high surface temperature (iron, etc.) with the leather may cause a damage.
- Protect the leather from harsh blows.
- Since ink on newspapers or magazines may get on the product and leave a permanent stain, do not leave it on the product. Especially if you sit with new jeans that give dark coloured paint on light coloured leather as an example, there may be stains. Note that this stain is not caused by the leather itself, but by the trousers that dye and colour.
- Weekly remove the dust or dirt on the surface of the product with a damp white and soft cotton cloth dampened with soapy water, rinse and dry when necessary.
- When coffee, tea, etc. spilled: Use a highly absorbent white cloth or paper. Do not delete it immediately! Make sure the stain is absorbed by the cloth or paper.
- Wipe off the remaining moisture with a soft cloth in circular motions.
- Alcohol and cologne are not recommended for difficult stains such as ink, ballpoint pen, lipstick. Wipe with warm soapy water with gentle circular movements.
- There may be colour and tone differences between different lots, arising from the nature of the production and within conventionally accepted limits.
- Please get a confirmation about stocks.

# New Sabine

Water repellent and high-colored material with linen effect.

CLASS A

## NEW SABINE



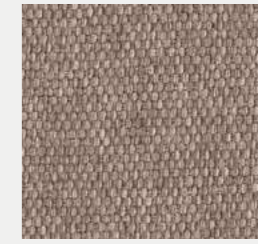
WHITE



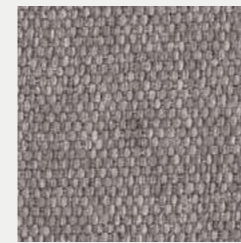
IVORY



TAN



SAND



SILVER



TAUPE



STONE



SADDLE



PALE BROWN



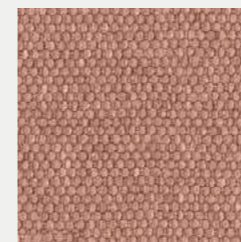
BROWN



CHOCO



WINE



BEIGE RED



MAROC



APRICOT



TOMATO RED



PASTEL VIOLET



KIWI



CEMENT GREY



GREEN GREY

# FABRIC & LEATHER



## NEW SABINE



NORDIC



AQUA



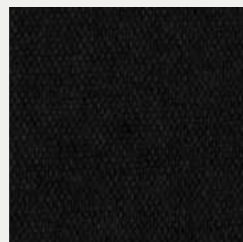
BLUE



STEEL BLUE



ANTHRASIT



BLACK



BLACK



436

## NEW SABINE

### PRODUCT SPECIFICATIONS

Technical Informations	Unit	Limit	Value	Test Method
Composition	100% polyester			
Weight	gr/m <sup>2</sup>		380	ISO 3801
Width	cm		137	ISO 22198
Roll Meter	m		50	ISO 12947-2 ISO 1294
Resistance to Abrasion	martindale		50.000	BS EN ISO 12947-2
Tear Strength	n	warp weft	133 106	ISO 13937-2
Resistance to Seam Slippage	mm	warp weft	1-2 0-1	ISO 13906-2
Pilling	2000 dvr		5	ISO 12945-2
Color Fastness		dry wet	5 5	ISO 105-X12

#### Product Characteristics

- Only valid for New Sabine colour codes.
- It can be cleaned with neutral cleaning materials. Chemical solvents should not be used.
- The detergent must not include oxide bleach and bleach.
- There may be colour and tone differences between different lots, arising from the nature of the production and within conventionally accepted limits.
- The product should not be exposed to direct sunlight.
- The cutting should be done after the approval of the colour, tone and defect controls by the related parties. In this context, taking into account that, although exceptional, there may be tonal differences of products that arrive in pieces, they should be checked with the delivery of the product before cutting. Making upholstery without above mentioned examination may cause not getting the desired result.
- While cutting or upholstery, the products should never be left folded, nor should they be left under-weight that may cause forming lines on them.
- The tape should never be used on the product surface. This matter, which our company pays attention to, should not be overlooked after the product has been checked or if it is wrapped for a second time during use. When the leftover product should be rolled, please pay attention not to fold it tightly.
- All kinds of leather and velvet should not come into direct contact with the sponge. Sponge should be covered with interlining or cotton lining
- Stains, such as oil, chocolate, chewed gum should never be cleaned with liquid (water, thinner, acetone and other solvents).
- Dry cleaning methods are also recommended for such stains.
- Vacuum cleaner can be used on daily and weekly basis.
- The dark colours of this product, which is produced as ball painting, should be cleaned with a damp cloth after laying and afterwards, the paint crumbs that could remain between the textures. This process can be done several times if necessary.
- The product has a teflon feature.
- Please get a confirmation about stocks.

437

Colors may slightly vary due to photographic lighting sources or your monitor settings.

# Nino

High abrasion resistant material, suitable for contract with a wool-like look and touch.

CLASS A



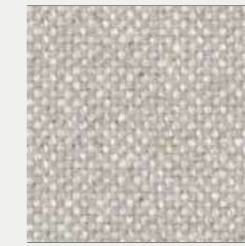
## NINO



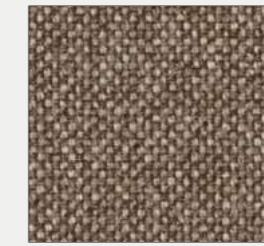
135-135



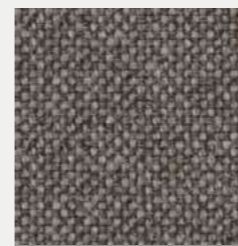
35-135



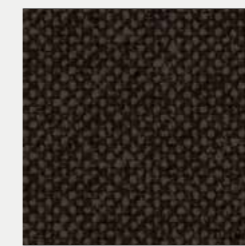
17-135



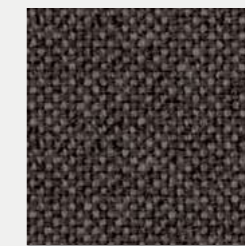
18-17



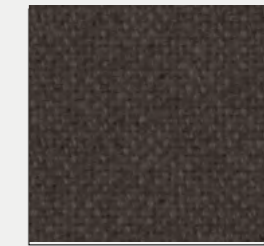
133-38



69-38



18-72



38-38



143-12



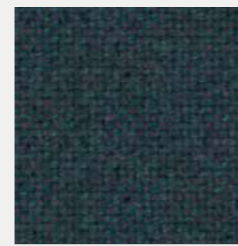
147-12



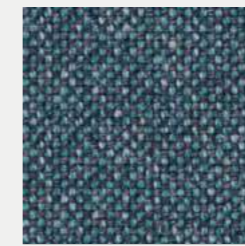
143-87



52-27



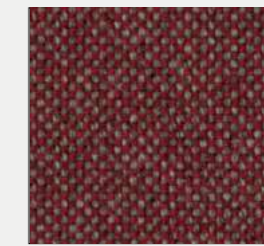
22-27



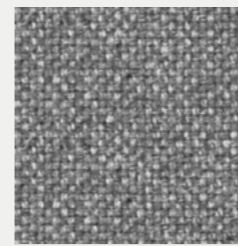
22-147



27-147



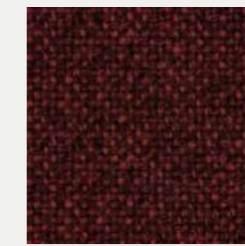
130-32



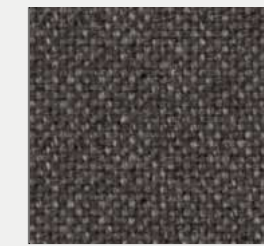
24-24



87-87

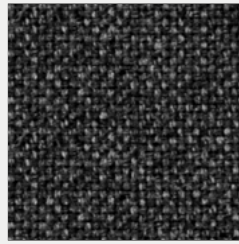


69-87

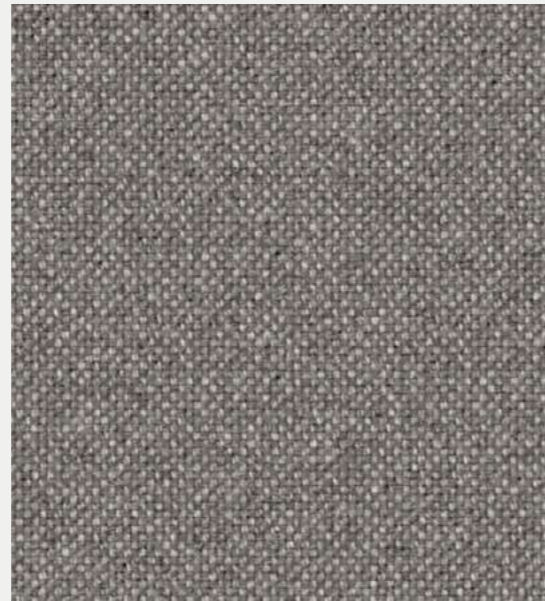


72-24

## NINO



09-24



07-135

## NINO

### PRODUCT SPECIFICATIONS

Technical Informations	Unit	Value	Test Method
Composition	100% polyester		
Weight	gr/m <sup>2</sup>	375 ±10%	
Width	cm	140 ±2	
Roll Meter	m	50	
Resistance to Abrasion	tour	80.000	ISO 12947-2:1998
Light Fastness		Blue Scale: 6 Grey Scale: 4	ISO 105-X12:2001
Pilling		5	ISO 12945-2:2000

#### Product Characteristics

- Only valid for Nino colour codes.
- It can be cleaned with neutral cleaning materials. Chemical solvents should not be used.
- The detergent must not include oxide bleach and bleach.
- There may be colour and tone differences between different lots, arising from the nature of the production and within conventionally accepted limits.
- The product should not be exposed to direct sunlight.
- The cutting should be done after the approval of the colour, tone and defect controls by the related parties. In this context, taking into account that, although exceptional, there may be tonal differences of products that arrive in pieces, they should be checked with the delivery of the product before cutting. Making upholstery without above mentioned examination may cause not getting the desired result.
- While cutting or upholstery, the products should never be left folded, nor should they be left under-weight that may cause forming lines on them.
- The tape should never be used on the product surface. This matter, which our company pays attention to, should not be overlooked after the product has been checked or if it is wrapped for a second time during use. When the leftover product should be rolled, please pay attention not to fold it tightly.
- All kinds of leather and velvet should not come into direct contact with the sponge. Sponge should be covered with interlining or cotton lining.
- Stains, such as oil, chocolate, chewed gum should never be cleaned with liquid (water, thinner, acetone and other solvents). Dry cleaning methods are also recommended for such stains.
- Vacuum cleaner can be used on daily and weekly basis.

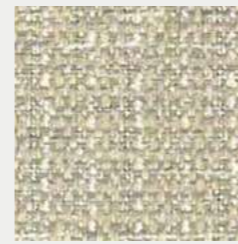


# Gana

Voluminous fabric  
with a 3D look  
emerging from  
opposite colour  
schemes.  
A balanced view  
in every space.

CLASS A

## GANA



01-01



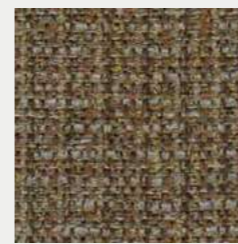
01-08



01-06



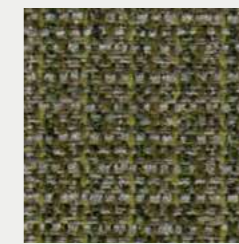
01-04



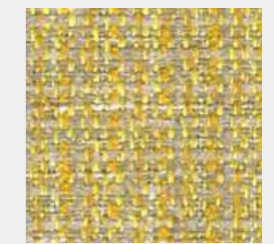
02-01



01-07



02-05



01-03



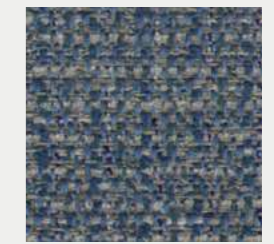
02-02



02-04



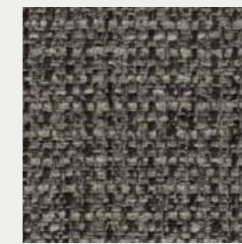
02-09



02-08



02-07



02-06

GANNA

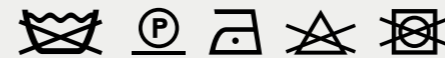


01-05

GANNA

## PRODUCT SPECIFICATIONS

Technical Informations	Unit	Value	Test Method
Weight	gr/m <sup>2</sup>	330 (± %5)	
Thickness	mm		
Width	cm	140	
Roll Meter	mt	50	
Resistance to Abrasion		40.000	EN ISO 12947-2
Tensile Strength	N	Weft-> 983 N Warp-> 953 N	EN ISO 13934-1
Tear Strength	N	Weft-> 81 N Warp-> 115 N	EN ISO 13937-3
Seam Slippage	mm	Weft-> 4,3 mm Warp-> 2,4 mm	EN ISO 13936-2
Pilling	2000 cycle	4-5	ISO 12945-2
Colour Fastness - WET		4	ISO 105-X12
Colour Fastness - DRY		3-4	ISO 105-X12
Colour Fastness to Light		4-6	ISO 105 B02
Composition		%77 PES %23 PAN	



### Product Characteristics

- Only valid for Gana colour codes.
- It can be cleaned with neutral cleaning materials. Chemical solvents should not be used.
- The detergent must not include oxide bleach and bleach.
- There may be colour and tone differences between different lots, arising from the nature of the production and within conventionally accepted limits.
- The product should not be exposed to direct sunlight.
- The cutting should be done after the approval of the colour, tone and defect controls by the related parties. In this context, taking into account that, although exceptional, there may be tonal differences of products that arrive in pieces, they should be checked with the delivery of the product before cutting. Making upholstery without above mentioned examination may cause not getting the desired result.
- While cutting or upholstery, the products should never be left folded, nor should they be left under-weight that may cause forming lines on them.
- The tape should never be used on the product surface. This matter, which our company pays attention to, should not be overlooked after the product has been checked or if it is wrapped for a second time during use. When the leftover product should be rolled, please pay attention not to fold it tightly.
- All kinds of leather and velvet should not come into direct contact with the sponge. Sponge should be covered with interlining or cotton lining.
- Stains, such as oil, chocolate, chewed gum should never be cleaned with liquid (water, thinner, acetone and other solvents).
- Dry cleaning methods are also recommended for such stains.
- Vacuum cleaner can be used on daily and weekly basis.
- Please get a confirmation about stocks.
- The using place and purpose of the product should be conventionally accepted places and purposes.
- No liability can be accepted for products that are not used properly.
- The information stated above is of reliable common values. Please ask for special values of the contract.

# Twister

Durable and fabric that adds inspiration to modern spaces.

CLASS A

## TWISTER



9852



9855



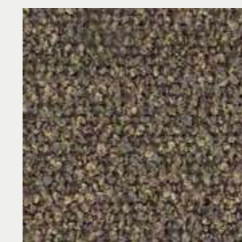
9859



16060



16056



5405



16059



1202



9858



5401



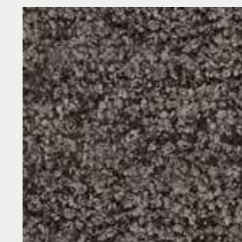
5408



5406



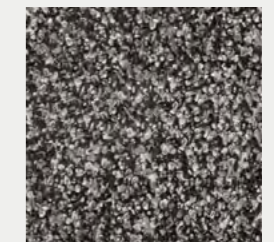
5404



5403



503



501

## TWISTER

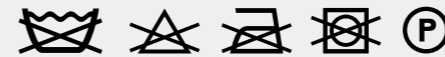


16054

## TWISTER

### PRODUCT SPECIFICATIONS

Technical Informations	Unit	Value	Test Method
Weight	gr/m <sup>2</sup>	507 (± %5)	BS EN ISO 12127:1998
Thickness	mm	1,5	
Width	cm	140 (± %5)	
Roll Meter	mt	40 (± %5)	
Resistance to Abrasion		50.000	EN ISO 12947-2
Seam Slippage	mm	<b>Weft 5.0 / Warp 4.5</b>	ISO 13936-2
Pilling	2000 cycle	4-5	ISO 12945-2
Colour Fastness to Light		5	TS EN ISO 105-B2
Composition		%13 COT %37 PES % 50 PP	



#### Product Characteristics

- Only valid for Twister colour codes.
- It can be cleaned with neutral cleaning materials. Chemical solvents should not be used.
- The detergent must not include oxide bleach and bleach.
- There may be colour and tone differences between different lots, arising from the nature of the production and within conventionally accepted limits.
- The product should not be exposed to direct sunlight.
- The cutting should be done after the approval of the colour, tone and defect controls by the related parties. In this context, taking into account that, although exceptional, there may be tonal differences of products that arrive in pieces, they should be checked with the delivery of the product before cutting. Making upholstery without above mentioned examination may cause not getting the desired result.
- While cutting or upholstery, the products should never be left folded, nor should they be left under-weight that may cause forming lines on them.
- The tape should never be used on the product surface. This matter, which our company pays attention to, should not be overlooked after the product has been checked or if it is wrapped for a second time during use. When the leftover product should be rolled, please pay attention not to fold it tightly.
- All kinds of leather and velvet should not come into direct contact with the sponge. Sponge should be covered with interlining or cotton lining.
- Stains, such as oil, chocolate, chewed gum should never be cleaned with liquid (water, thinner, acetone and other solvents).
- Dry cleaning methods are also recommended for such stains.
- Vacuum cleaner can be used on daily and weekly basis.
- Please get a confirmation about stocks.
- The using place and purpose of the product should be conventionally accepted places and purposes.
- No liability can be accepted for products that are not used properly.
- The information stated above is of reliable common values. Please ask for special values of the contract.

# Plain Melange

Water repellent, stain resistant and mildew resistant fabric, designed to furnish indoor and outdoor spaces.

Only for Sole Collection.

**CLASS A**

IRISUN - PLAIN MELANGE



## IRISUN - PLAIN MELANGE



874



## IRISUN - PLAIN MELANGE

### PRODUCT SPECIFICATIONS

Yarn	100% solution dyed acrylic
Width	137 cm
Roll length	30 m
Weight	240 gr/m <sup>2</sup>
Martindal	15000 cycles
Finishing	Water repellent, anti-stain and anti-mould treatment
Oil-repellency	5 off 8
Spray Test	5 off 5
UV Colour fastness	7 off 8
Colour fastness to weather	7 off 8
Colour fastness after washing at 40°C	5 off 5
Flame resistance	CAL TB 117 - 2013 Section 1
Warranty	5 years
Tolerance	± 5%
Care	See the ISO symbols
Biocides	It contains biocidal agent with approved active substances: Octyl Isothiazolinone